



May 2022

CCHBC Sustainability Monitoring CCH Program Description

Coca-Cola HBC World's second most sustainable beverage company in the 2021 Dow Jones Sustainability Index

Assessment of Environmental and Social Performance and improving it over time is becoming of utmost importance for organisations and stakeholders and Sustainability Recognition Schemes

"We are honoured and proud that the commitment of our employees and partners to sustainable practices has again resulted in this recognition. We are well aware though that this is just a snapshot. In reality, the work never stops and there is always more to be done. That's why we put so much focus on the consistent, long-term delivery of our sustainability goals"

Chief Executive Zoran Bogdanovic



Sustainability is fully integrated into Procurement decisions



The Procurement Sustainability Program at a glance

2021-22 Highlights

Supplier Category Risk Assessment program:

16199 Suppliers assessed
97.1% of total supply base
99.7% of CCH spend

EcoVadis:

336 Suppliers added in 2021 reaching total 1184 Suppliers evaluated by end 2021
YTD May 2022, we reached 1277 (7% increase since Jan 2022)

100% Corrective Action Plans in place with Active suppliers

SGP TCCC Audits:

86 Audits - 2021
100% CAPs in place

PSA coverage

80% for 2021 (-2% vs YA) weighted average of which Sugar + HFS crops score 79.3% and Juice fruit crops are 95.9%

LEVELS OF ACTIONS

TCCC System 3rd-Party SGP Audits:

EcoVadis Platform & Category Risk Assessment:

Environmental Social & Governance (ESG) Questionnaires

Annual Supplier Evaluation Program

SCOPE:

- TCCC prerequisite supported by SPMs/ CEPG
 - Raw Materials
 - Sustainable Agriculture
 - Primary Packaging

- Group Critical & Country Strategic
- As of 2020 TCCC implementation – CCH founding member

- Supports all cases where EcoVadis is not used/ available
- Group Critical & Country Strategic suppliers

- CCH Performance Evaluation program (annual)
- X-functional activity
- Suppliers covering collectively >90% of annual spend as minimum

AREAS CAPTURED

- SGPs compliance
- Specialist certifications per commodity i.e., SAGP
- Corrective Action Plans (CAP)

- Environment:** i.e. Energy, CHG, Water, Waste
- Social:** i.e. HSE, Human Rights, Working Conditions
- Ethics:** i.e. Corruption, Bribery, Legal compliance
- Supply Chain:** Environmental performance
- Corrective Action Plans

- Captures info on Environment, Human Rights & Labour. HSE, Society, Agriculture
- CCH Buyer manually collects and assesses via scoring scale

- Basic questionnaire on
- Account Management
 - Quality
 - HSE
 - Financial performance
 - Sustainability/ Human Rights

CONTRIBUTION TO CCH CORPORATE SUSTAINABILITY

- Independent & Certifiable
- Supported by specialists
- 100% auditable trail

- Automated Dashboard
- Automated CAP
- 100% Auditable trail

- Internal Assessment that covers risks evaluation for ESG requirements

- Verifies that CCH has a program in place to evaluate overall performance in an organize manner
- Contributes to ESG Assessment

NOTES

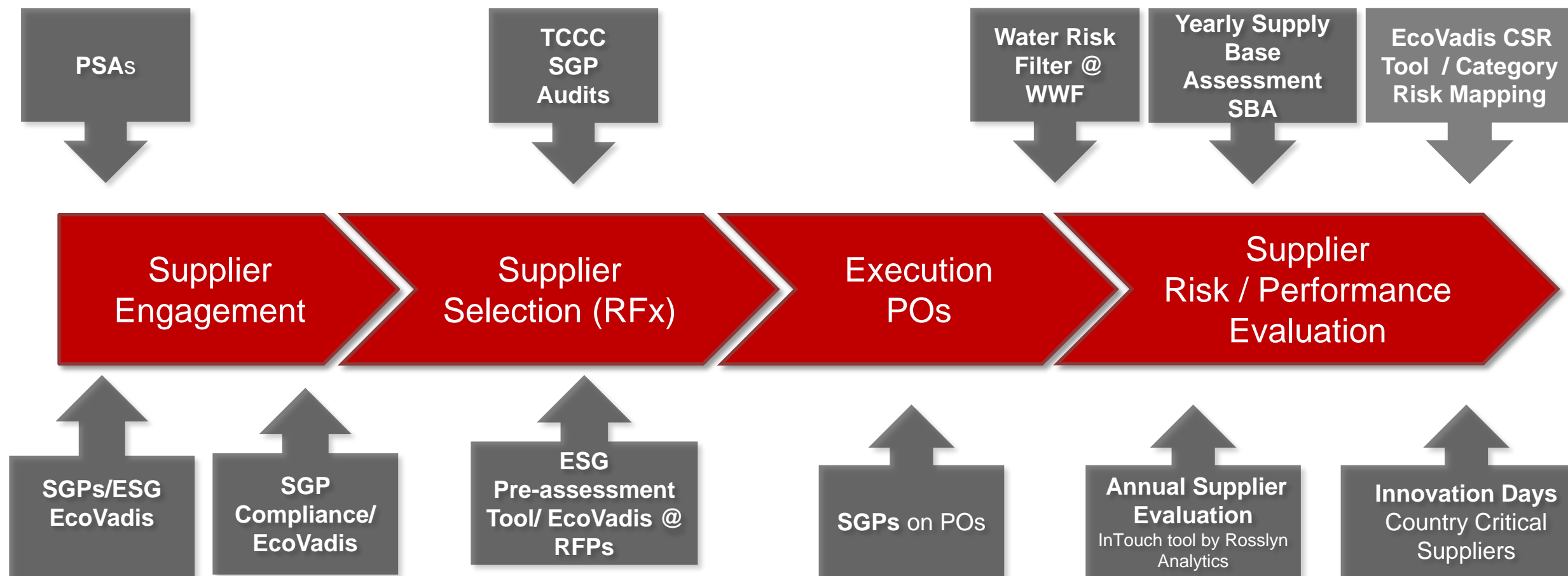
- High Volume Group Critical System suppliers in Primary Packaging & Raw Materials

- Critical CCH Suppliers on Group and BU Level across Categories

- Used for lower value, Tactical buy and as initial screening during tenders

- Critical Suppliers 360o performance + dedicated section on Sustainability

Sustainability Monitoring through E2E Procurement Process



Group & BUs Support for Procurement Sustainability Program

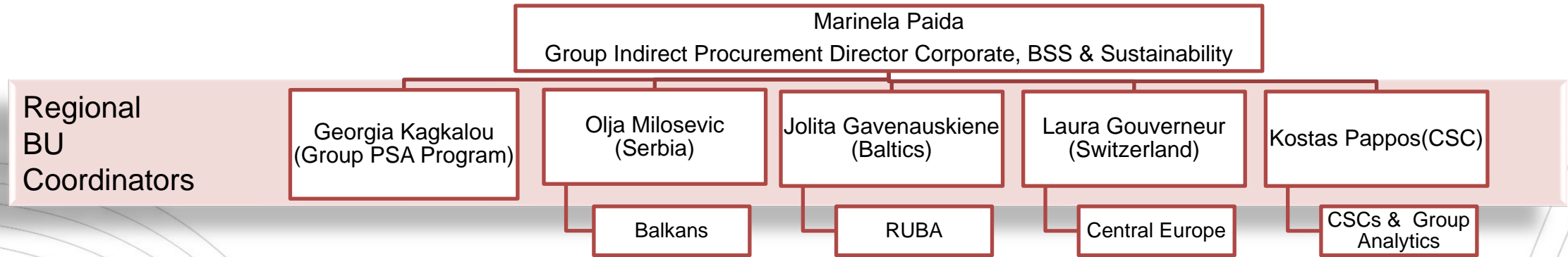
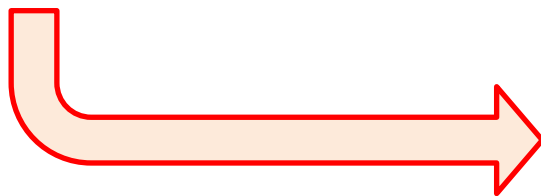


Table 5.C. – Awarding Criteria weights and Ownership

Type of Criteria	Description	Weight	Decision
Technical	Specification and Quality elements	47.5 %	Requesting Function
Commercial	Price and Contract elements	47.5 %	Procurement
Sustainability	Based on the CSR Assurance Matrix (Appendix 13.8.3)	5 %	Requesting Function & Procurement



To achieve assurance in CSR from T1 suppliers, Procurement seeks from vendors the appropriate documentation under the following ESG assessment tools

CSR Coverage	Assurance	Docs Required	Extra Modules strongly advised
TCC SGP Audits	HIGH	Audit report	N/A
SMETA 6.0	HIGH	SMETA 6.0 Report	N/A
URSA	HIGH	URSA Report	N/A
SMETA 4 Pillar	MEDIUM	SMETA 4 Report	AIM – Progress Module
GSCP Equivalent	MEDIUM	Audit Report	AIM – Progress Module
BSCI or EICC	MEDIUM	Audit Report	AIM – Progress Module
Ecovadis Assessment >45	MEDIUM	Ecovadis Certificate	
ESG Form	MEDIUM	ESG Form submission	
EcoVadis IQ	MEDIUM/ LOW	Platform Supplier Score	

Note: Other types of 3rd party assessments accepted upon review

Coca-Cola HBC aspires big suppliers to gain also certification to the following standards (requested in relevance to industry):

- ISO 9001 (quality);
- ISO 14001 (environment);
- ISO 45000 (health and safety);
- Ingredient and packaging suppliers must also achieve certification to FSSC 22000 for food safety or equivalent for FSSC 22000, recognized under GFSI framework



High Risk Suppliers – Definition per Assessment Tool

Tool	Definition
Annual Supplier's Performance Assessment (Rapid Rosslyn)	< 40 points
EcoVadis	<45 Overall scoring and <30 Theme
Risk ESG Self-Assessment Tool	Red Colour Rating
SGP Compliance Audits	Red and Orange Colour Rating
SBA	Critical Risk Plot Areas
Water Risk Filter @ WWF	High & Very High Risks (<3.4-5.00)
Category Risk Assessment overall score	Severe Category + Critical supplier + No other assessment data available



Supplier Category Risk Mapping - Key results at glance

The objective of risk mapping is to address all risks related to environmental, social and ethics areas.

- CSR Risk accounts for 60 % of Overall Risk for each category
- Procurement Risk accounts for 40 % of Overall Risk for each category

Assessed in 2021	
Risk Category	No. of Supplier Codes*
Severe	132
High	547
Medium High	2,502
Medium Low	5,492
Low	5,382
Very Low	1,829
Grand Total	15,884

*Only Procurement addressable supply base / Excluding TCCC & Finished goods (FG)

Categories at Critical Priority:

CLOSURES PLASTIC, GAS/OIL FOR CO2 PROD, PET RESIN, REF GLASS BOTTLES, GLASSWARE, PET PREFORMS, PLASTIC LABELS, BIB BAGS, PLASTIC, ASEPTIC CARTONS, CAN BODIES, SPORT DRINKS, COOLERS, WAREHOUSING SERVICES, ENERGY-ELECTRICITY, TEA, HFS, SUGAR, ENERGY-GAS, CRATES, WATER, CO2 (BULK), FILM SHRINK PRINTED, ENERGY-OIL, FILM SHRINK BLANK, STRAWS, PET BOTTLES, HANDLES, SLEEVES, GLUES, GLUE in BOM, FILM STRETCH, CONSUMABLES



2021 Supplier Assessment Summary

No. of Assessed Suppliers per Risk Category & Assessment Type ³

Risk Category	Total Assessed	EcoVadis	Rosslyn Evaluation	SBA	PSA	SGP Audits	WRF	ESG	Category Risk Mapping ²
Severe	132	107	122	94	0	53	125	6	2
High	547	297	450	191	31	108	262	37	72
Medium High	2,502	517	1,098	76	17	9	76	211	1,242
Medium Low	5,492	422	1,627	77	10	0	93	391	3,617
Low	5,382	418	1,378	104	0	0	4	205	3,847
Very Low	1,829	45	340	12	0	0	0	59	1,457
Grand Total	15,884¹	1,806	5,015	554	58	170	560	909	10,237

Information:

In CCH we recognize Parenting - While a supplier may have a different code in multiple BUs for systemic reasons, it is still the same supplier as the parent.



No. of Assessed Suppliers per Criticality & Assessment Type ³

Criticality	Total Assessed	EcoVadis	Rosslyn Evaluation	SBA	PSA	SGP Audits	WRF	ESG	Category Risk Mapping ²
Country Strategic	2,965	107	122	94	0	53	125	6	472
Group Critical	855	297	450	191	31	108	262	37	38
Tactical Supplier	12,064	517	1,098	76	17	9	76	211	9,727
Grand Total	15,884¹	1,806	5,015	554	58	170	560	909	10,237

Risk Category	Supplier Criticality	Supplier Codes
Severe	Country Strategic	1
	Tactical Supplier	1
	Total	2
High	Country Strategic	9
	Tactical Supplier	63
	Total	72
Medium High	Country Strategic	102
	Group Critical	7
	Tactical Supplier	1,133
	Total	1,242
Medium Low	Country Strategic	151
	Group Critical	7
	Tactical Supplier	3,459
	Total	3,617
Low	Country Strategic	176
	Group Critical	15
	Tactical Supplier	3,656
	Total	3,847
Very Low	Country Strategic	33
	Group Critical	9
	Tactical Supplier	1,415
	Total	1,457
Grand Total		10,237

% of Assessed Suppliers per Criticality & Assessment Type ³

Criticality	Total Assessed	EcoVadis	Rosslyn Evaluation	SBA	PSA	SGP Audits	WRF	ESG	Category Risk Mapping ²
Country Strategic	19%	41%	47%	13%	5%	10%	32%	43%	5%
Group Critical	5%	32%	16%	78%	88%	88%	55%	4%	0%
Tactical Supplier	76%	26%	37%	9%	7%	2%	14%	54%	95%



Note 1: with TCCC and finished goods(FG) which are assessed by QSE & Commercial , we have **16,199** suppliers assessed in Total

Note 2: Category Risk Mapping: developed by EcoVadis to measure inherent risk of suppliers in accordance with supplier category, spend and criticality to CCH business

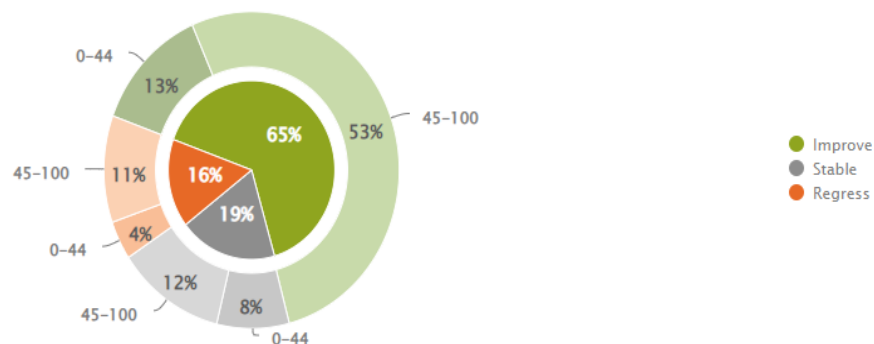
Note 3: Reported at Supplier Code level

Performance of Supply Base in Ecovadis

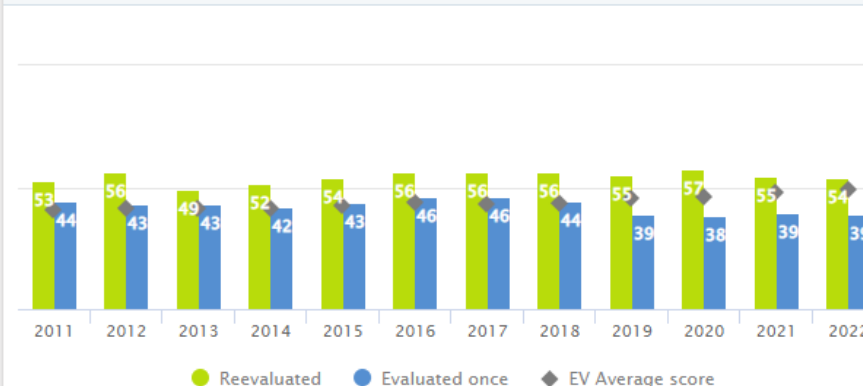
- YTD that we compile this report (May 2022) we have assessed 1277 suppliers under Ecovadis and we have experienced a +4.1 increase on average score, with all assessed subcategories scoring better
- Overall, we see for established suppliers that are under review and evaluation YoY sustainable improvement. Our **Correction Action Plans** are showing **100% improvement** across all 4 pillars. Especially under **Human Rights (LAB)** we see an **improvement in 2021** vs 2020 of **4.1 pts**
- New recruits exhibit lower scores at entry level, pushing the average a bit down. This we consider a normal outcome; we invest and work with our suppliers to educate them on our requirements before they can improve.

Scored Suppliers	Reevaluated	Overall AVG	ENV	LAB	FBP	SUP
1277	60 %	+4.1 pts	+4.1 pts	+4.1 pts	+4.8 pts	+2.5 pts !

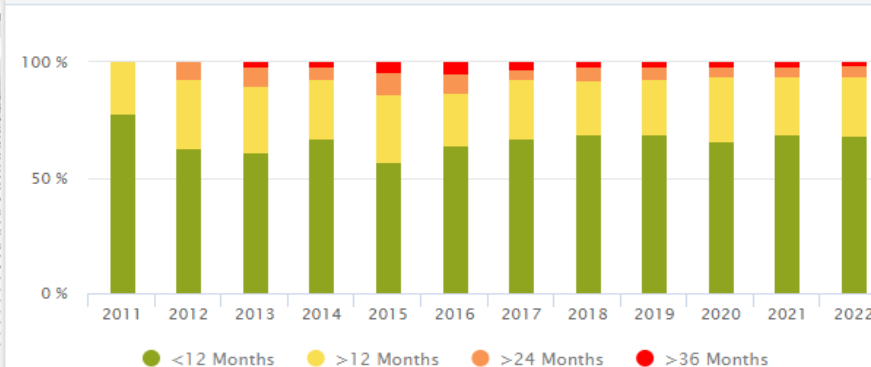
EVOLUTION OF REEVALUATED SUPPLIERS



SUPPLIERS AVERAGE SCORE BY YEAR

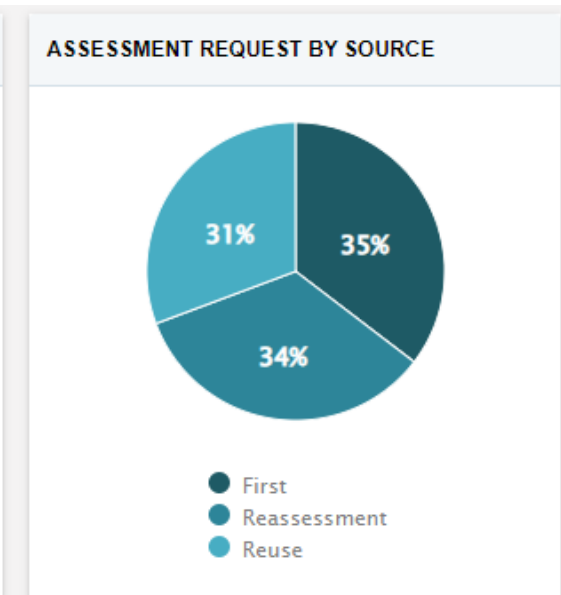
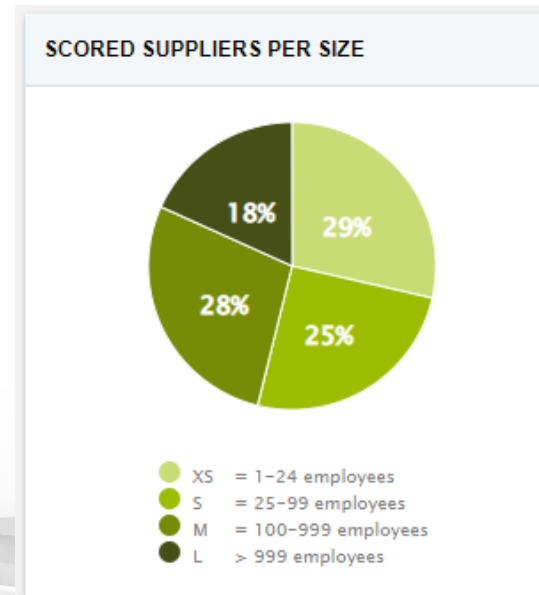
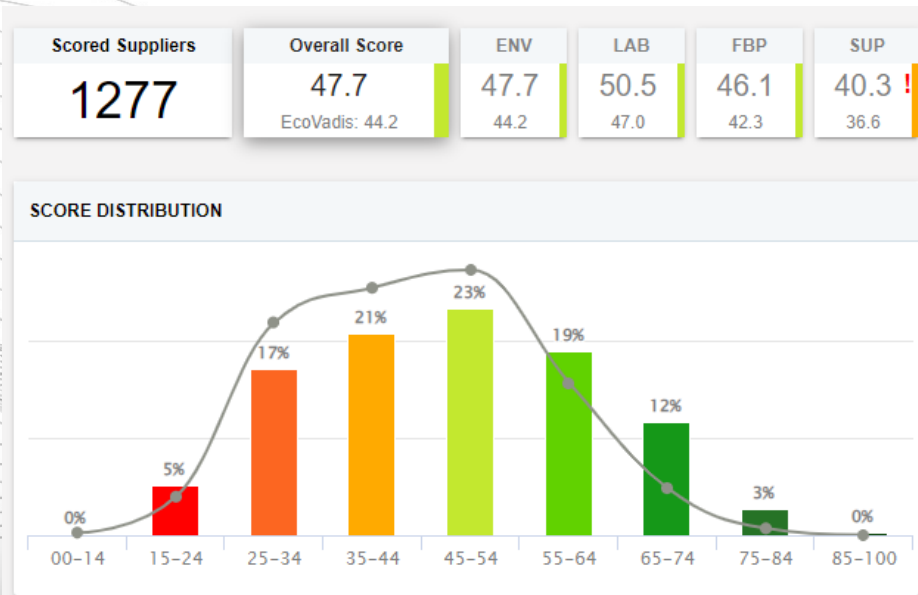


SCORECARD VALIDITY PER YEAR



Performance of Supply Base in Ecovadis

- CCH Supply base scores are higher than EcoVadis averages across all pillars and in overall score CCH is +3.5 above EcoVadis average.
- Notable that Latin America based new recruits are a point of interest to work on further. These are typically ingredients suppliers
- This element we cover primarily outside the Ecovadis platform, through the Sustainable Agriculture Program of TCCS and CCH combined, as Latin American based suppliers are Sugar or Juices Ingredients suppliers. The results on these efforts are illustrated in the relevant SAGP section of the submission



SCORED SUPPLIERS BY REGION

SCORED SUPPLIERS **1277**

Europe and Central Asia	1,049
Sub-Saharan Africa	175
North America	41
East Asia and Pacific	5
Latin America & Caribbean	3
Middle East & North Africa	3
South Asia	1



CCH Methodology Assessment Details



Ongoing Sustainability Monitoring - Process Description (1/3)

We assess our supply base through:

CSR/ ESG Compliance Monitoring - we monitor the process and compliance via third party SGP audits organized by The Coca Cola Company (TCCC), EcoVadis CSR Platform and a new tool introduced in 2018 – Category Risk Mapping provided by EcoVadis and fully refreshed in 2020.

TCCC ensure that all ingredient, primary packaging and global marketing suppliers are audited for compliance with our Supplier Guiding Principles (SGP) on a regular basis as per the audit results and agreed methodology (attached as separate document). Audits are conducted via independent 3rd party auditors.

EcoVadis CSR Platform: Starting 2017 we have introduced EcoVadis - a collaborative platform that provides sustainability ratings, performance monitoring and continues improvement tools for our supply chains. The platform delivers simple and reliable scorecards to monitor supplier Corporate Social Responsibility (CSR) practices covering 150 purchasing categories, 110 countries, and 21 CSR indicators in 4 Themes: Environmental, Labor and Human Rights, Ethics and Supply Chain based on international standards as UN Global Compact, ISO 26000, GRI, ILO etc.

EcoVadis IQ Platform: EcoVadis IQ gives procurement and sustainability teams immediate sustainability risk insights across their entire supply base and smart recommendations on next steps, providing a foundation for proactive sustainability risk management and an engine for a smarter assessment strategy.

EcoVadis Inputs

- ✓ Inherent Industry & Country Risk
- ✓ Deep Sustainability Expertise
- ✓ Insights from 150,000+ Assessments



Your Customer Data

- ✓ Supplier Information
- ✓ Supplier Spend
- ✓ Supplier Criticality



Ongoing Sustainability Monitoring - Process Description (2/3)

Category Risk Mapping: In 2018 we introduced Category Risk Mapping provided by EcoVadis. Based on this an additional assessment layer has been added in 2019 that complements previous practices and we asked Ecovadis to refresh the entire supply base Categorisation in 2020.

In 2021 We assessed supplier risk according to their Category Risk as developed by EcoVadis on behalf of CCHBC and Procurement Risk criteria developed internally. Each supplier is then mapped against each respective category and classified under an overall Risk level. As a next step we have recorded for each supplier all available info on sustainability practices, covering 16197 suppliers in total (97.1% of toall CCH active vendor codes in CCH for 2021).

As a result, we are now clear which suppliers we do not have adequate information for. The next step, and based on criticality and risk level, we proceed to create additional asks and action plans to cover for gaps gradually prioritizing suppliers on criticality - (1.6.3 CCHBC Risk Assessment Analysis 2021 – DJSI)

Supply Base Assessment (SBA) for our Group Critical Suppliers: Assessment is performed on a yearly basis by our Strategic Procurement Managers (SPMs) and the support and insight of the Denkstatt specialist consultants that are supporting the methodology develop and assessment validation.

The SBA covers areas as Supply Positioning and Risk Assessment in areas of Water stress, Climate Change, Forced Labour, Child Labour, Disregard of Labour Rights & Financial Risks. The full SBA 2021 Document is attached as separate document – (1.6.3 CCHBC 2021 Supply Base Assessment (SBA))



Ongoing Sustainability Monitoring - Process Description (3/3)

Annual Suppliers' Performance Assessment with InTouch Rosslyn Tool: The tool is used to assess overall performance of our Critical Suppliers (Group Critical and Country Strategic). Assessment is done on a yearly basis – (1.7.3 CCHBC Risk Mapping Analysis 2020 TAB: *Supplier Assessment Summary*)

- Sustainability plays an important role for CCH, thus in **2021** Annual Supplier Evaluation **we increased overall weight of Sustainability** section in all different evaluation questionnaires from **15% to 20%**
- We also **upgraded the entire Sustainability Questionnaire to reflect focus on Risk Assessment and Human Rights**
- To underline the importance of **Carbon footprint reduction** in our Supply Chain, an additional question on **Net Zero engagement topic** was added with specific emphasis on **SBTi commitments and CDP disclosure**

PREVIOUS

NEW 2021 VERSION

Weight	Sub-Score	Question	Answers / Points
	20%	CCH Supplier Guiding Principles /SGPs/	100 - Supplier has unconditionally accepted CCH SGPs; Supplier has agreed and CCH SGPs are an integral part of signed contract with Supplier; Supplier is member of SEDEX/Eco Vadis; Supplier has not violated any of CCH SGPs. 50 - Supplier has unconditionally accepted CCH SGPs; Supplier has agreed and CCH SGPs are an integral part of signed contract with Supplier; Supplier is NOT a member of SEDEX/Eco Vadis; If any CCH SGPs were violated by Supplier, Supplier has immediately & unconditionally implemented corrective actions. 1 - Supplier rejected compliance with CCH SGPs and NOT an integral part of a signed contract with Supplier; Supplier is NOT a member of SEDEX/Eco Vadis. 0 - Not applicable
15%	40%	CSR & Sustainability programs in place	100 - Advanced program in place including active energy reduction programme & primary and secondary packaging materials reduction programs / ready to share Sustainability policies and targets with Hellenic. 50 - There is a program in place but no real focus on energy reduction programme, carbon footprint & primary and secondary packaging materials reduction programs 1 - No program in place 0 - Not applicable
	40%	- Supplier Environmental assessment, assessment for Labour practices, Human rights and Impact on society	100 - /Operate in full / strict compliance with all applicable laws / + ingredients supplier put in place actions upstream with their supply base (farming, agricultural, labour practices) 50 - Corrective action and Follow-up may be required in case of minor non-compliance 1 - Corrective Action and Follow-Up Required 0 - Not applicable

Weight	Sub-Score	Question	Answers / Points
	55%	Ecovadis / PSA compliance/ ESG Assessment / iQ Category Risk Assessment	100 – Supplier has been assessed by EcoVadis and scores > 45/ OR Supplier has a SMETA 6.0 and Green status / OR Supplier is PSA compliant / OR Supplier has gone through a TCCC SGP audit and has passed with no findings (Green Status) / AND Where applicable supplier has a GREEN score for Water risks 70 - Supplier has been assessed by EcoVadis and scores < 45/ OR Supplier has a SMETA 6.0 but with some findings and action plans/ Supplier actively working towards PSA compliance and has a date by which this will be obtained in place / OR Supplier has gone through a TCCC SGP audit and has passed with minor findings (Yellow Status)/ AND Where applicable supplier has a YELLOW score for Water risks 50 - Supplier has been assessed by ESG Form only and passed (Green Status) or has some finding (Yellow status) and an action plan in place / OR Supplier has gone through a TCCC SGP audit and has passed with some findings (Orange or Red Status), has an action plan in place and is planned to be re-audited in max 12 months time/ AND Where applicable supplier has a ORANGE or RED score for Water risks/ OR Supplier has spend <100K AND we have conducted iQ Ecovadis Category Risk Assessment with scoring Green or Yellow 1 - No assessment available OR Supplier has been assessed by ESG Form only and is scoring ORANGE or RED OR Supplier has spend <100K AND iQ Ecovadis Category Risk Assessment available with RED score
20%	15%	Carbon footprint reduction program in place (Net Zero Emissions Target)	100 – Supplier has official SBTi targets approved and pledged towards 1.5oC 70 - Supplier has pledged SBTi targets and working towards approval or participates under the TCCS CEPG Supplier Emissions pilot program 50 – Supplier is disclosing environmental information in the CDP 30 – Supplier has introduced 100% renewable energy in their operations and/ or have specific emission reduction action plans in place that they have shared with CCH or are published in their Integrated Annual Report 1 - Supplier has nothing in place for emissions
	30%	Supplier Human Rights Program	100 – Supplier has been through TCCC SGP Audit and passed (Green status)/ OR Supplier scores > 45 in Ecovadis under Human Rights section/ OR Supplier discloses Human Rights practices in the GRI / OR Supplier has successfully passed SMETA 6.0 Audit or equivalent on Human Rights 50 – Supplier has been assessed with any of the ways described above, may had some minor findings but have in place action plans with specific dates committed for completion OR Suppliers has spend <100K and we have an iQ Ecovadis Category Risk Assessment score that is Green 30 – Supplier has been assessed via ESG Form only and passed (Green or Yellow status) all Human Rights questions, OR Suppliers has spend <100K and we have an iQ Ecovadis Category Risk Assessment score that is Yellow 1 - No Human Rights Programs in place OR has been assessed via ESG Form only and scored Orange or Red on all Human Rights questions OR Suppliers has spend <100K and we have an iQ Ecovadis Category Risk Assessment score that is RED

Demonstration of Compliance

Demonstration of Compliance Supplier must be able to demonstrate, at the request and to the satisfaction of Coca-Cola Hellenic, compliance with the **Supplier Guiding Principles (SGPs)** requirements.

If the eight Core Convention of the International Labour Organisation establish higher standard than local law, the **Supplier shall meet the ILO standards.**

These minimum requirements are part of all agreements between Coca-Cola Hellenic and its direct suppliers. We expect our suppliers to develop and implement appropriate internal business processes to ensure compliance with these Supplier Guiding Principles.

We collaborate with The Coca-Cola Company, which routinely utilize independent third parties to assess suppliers' compliance with the Supplier Guiding Principles; the assessments include confidential interviews with employees and on-site contract workers.

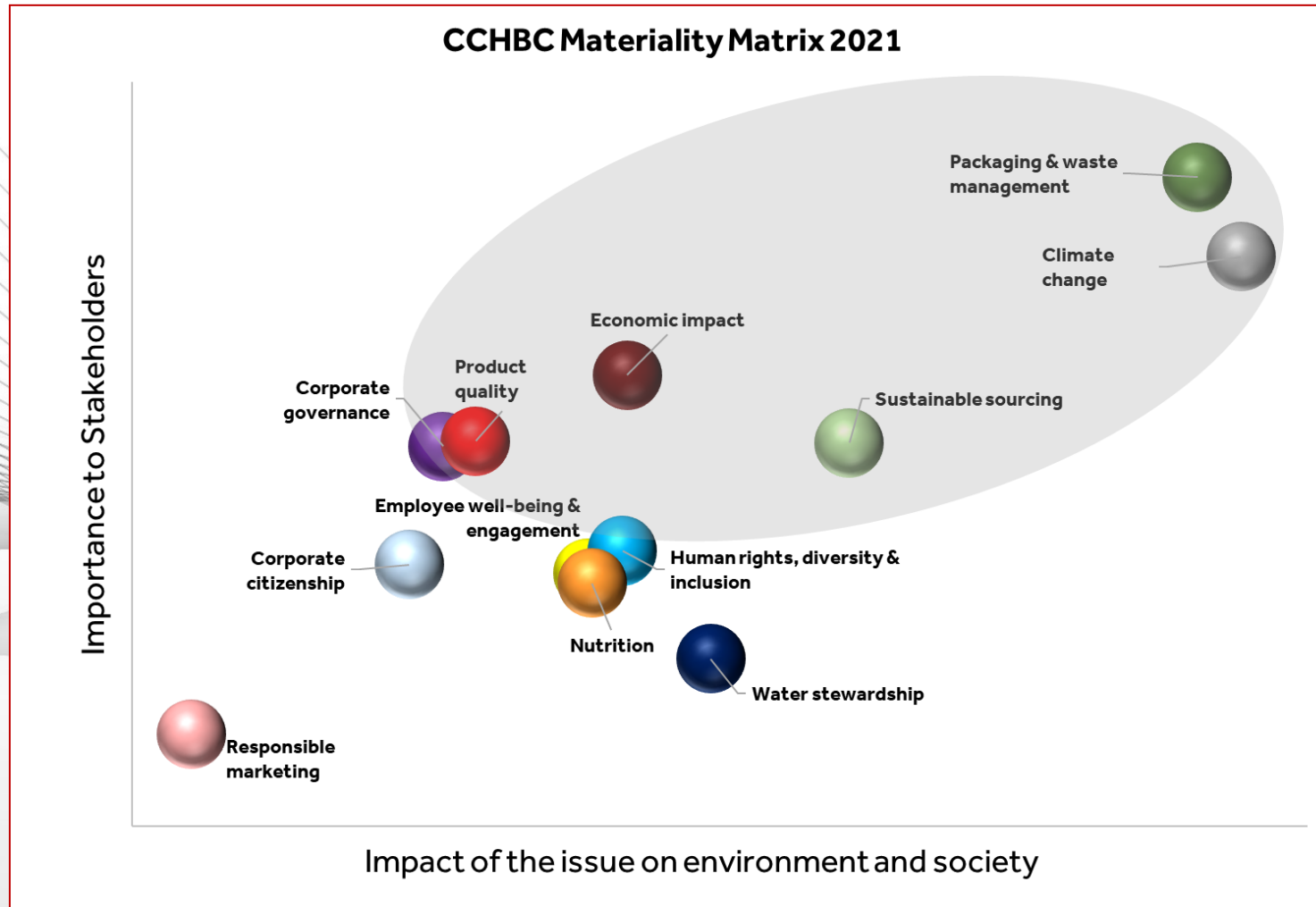
If a supplier fails to uphold any aspect of the requirements of the Supplier Guiding Principles, the supplier is expected to implement corrective actions. Coca-Cola Hellenic reserves the right to terminate an agreement with any supplier that cannot demonstrate that they are upholding the requirements of these Supplier Guiding Principles.



CCH Materiality Matrix 2021 & Annual Supply Base Assessment (SBA) for Group Critical Supplier

2021 we have upgraded the SBA Assessment Methodology with the input of specialist consultants from **denkstatt** and **sustainable**

The risk categories under assessment have been fully updated and the starting point has been the CCHBC Materiality Matrix



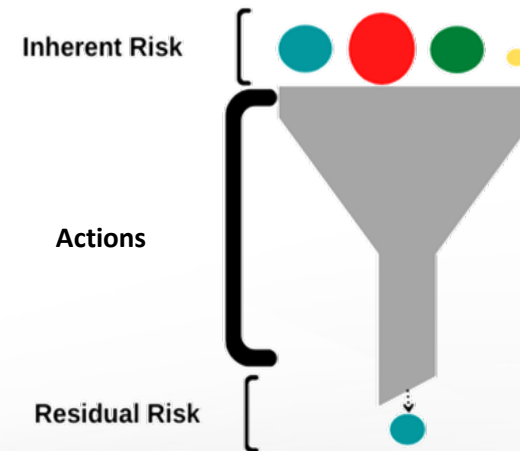
SBA Sustainability Risk Categories “before and after”

2020 Risk Categories	2021 Risk Categories	New Risk Categories Description
Water Risks	1. Water	Participation to water stress and/or water scarcity through a substantial consumption of water in the value chain and/or direct or indirect contamination
Energy Use Risks	2. Climate Change	Impact on Climate Change through the direct or indirect emission of Greenhouse Gas along the upward value chain
Social Risks	3.1 Forced Labour	Work or service in the supply chain that would be required of a person under threat of punishment and for which he or she has not made himself or herself available as voluntarily
	3.2 Child Labour	Presence in the supply chain of exploitation of children interfering with compulsory school attendance and/or through a mentally, physically, socially and/or morally harmful work
	3.3 Disregard of Labour rights	Lack of consideration of people's rights in the relation with their employers in the supply chain through freedom of association, unequal treatment and/or fair wage



SBA Methodology: Inherent Risk vs. Residual Risk

- The supply base assessment focuses on inherent risk in each risk category of the critical suppliers in each purchasing category
- In the methodology for 2022, we only use publicly available data
- Residual risk logic has been applied in the following cases:
 - For Sweeteners and Juices, if the supplier is certified with “**Principles for Sustainable Agriculture (PSA)**”, the sustainability risk of the supplier is classified as “Low” (overruling if needed the generic risk methodology result)
 - For all other categories, if the supplier has an Ecovadis score for “labour and human rights” or “environment” of **>65**, the respective sustainability risk of the supplier is classified as “Low” (overruling if needed the generic risk methodology result)



SBA Methodology - Social Risk Levels Analysis

- The Social Risk Level Risk Analysis evaluates social risk in the countries we operate. Hellenic attributes the increase in social risk to the economic downturn and the worsening global human security situation that has increased the number of internally displaced people and refugees who are most vulnerable to economic and labour exploitation. Challenging economic conditions in many countries due to the financial crisis continuing from 2008, and the consequent reduced donor money for education, etc. have also contributed to more children trapped in work to support their families.
- As a region, Africa 'brims' with high risk with majority of the countries falling in the categories of 'high' risk. We also rank large and emerging economies as being of high risk. Philippines, Viet Nam, Indonesia, Mexico as well as other developing countries, i.e., India and China pose extreme child labour risks to supply chains of companies. As per Maplecroft, the risks that these economies pose to companies are distinct as they form critical links within the multinational supply chains. These economies provide a source for a range of materials/goods that companies use in the supply chains of their products, many of which are tainted with child labour violations.



Sustainability Risk Categories – Alternative risk factors

	2021 Risk Categories	Risk Factor 1 – Country Risk	Risk Factor 2
	1. Water	Country Risk ▪ Water Risk Filter , WWF	Commodity Risk ▪ Water footprint of the purchasing category, internal CCHBC analysis
	2. Climate Change	Country Risk ▪ EPI Climate Change Index , Yale University	Commodity Risk ▪ Emission factor of the purchasing category – CCHBC internal factors
Social Risks Section	3.1 Forced Labour	Country Risk ▪ Global Slavery Index , Walk Free Foundation	Commodity Risk ▪ Indication of Forced Labour in the industry (Yes/No), analysis of dedicated organisations done by sustainable AG
	3.2 Child Labour	Country Risk ▪ Proportion of children engaged in economic activity (%), UNICEF & ILOSTAT	Commodity Risk ▪ Indication of Child Labour in the industry (Yes/No), analysis of dedicated organisations done by sustainable AG
	3.3 Disregard of Labour rights	Country Risk ▪ Global Rights Index , International Trade Union Confederation (ITUC)	Country Risk ▪ Working poverty rate (%), ILOSTAT





Methodology Approach Climate Change

2. Climate Change

Description: Impact on Climate Change through the direct or indirect emission of Greenhouse Gas along the upward value chain

Risk Factor 1 - Country Risk Analysis	Risk Factor 2 - Emission factor per purchasing category
<ul style="list-style-type: none">▪ EPI Climate Change Index from Yale University, 2021 <p>The Yale University in the United States monitors a global environmental index per country, in which Climate has a specific section.</p> <p>The Climate Change index is composed of eight indicators detailed in the next slide, and ranges from 1 (bad performance on the greenhouse gas theme) to 100 (good performance).</p>	<ul style="list-style-type: none">▪ CCHBC internal emission factors <p>CCHBC uses internal emissions per purchasing category for the calculation of the Scope 3.1 “Purchased Goods and Services”.</p> <p>The chosen emission factors represent the generic emission level of the product or service purchased, and they have been sorted according to their impact.</p>

2. Climate Change – Risk Factor 1

Country risk calculation – Details of EPI Climate Change Index



The EPI Climate Change Index includes in its calculation the following items:

Climate Change	CCH	40%	CO ₂ Growth Rate	CDA	55%
			CH ₄ Growth Rate	CHA	15%
			F-gas Growth Rate	FGA	10%
			N ₂ O Growth Rate	NDA	5%
			Black Carbon Growth Rate	BCA	5%
			CO ₂ from Land Cover	LCB	2.5%
			GHG Intensity Trend	GIB	5%
			GHG per Capita	GHP	2.5%

Scoring model

Index	Risk Estimation
0,00 to 24,99	Very High
25,00 to 49,99	High
50,00 to 74,99	Medium
> 75,00	Low

CDA: The CO₂ growth rate is calculated as the average annual rate of increase or decrease in raw carbon dioxide emissions.

CHA: The CH₄ growth rate, is calculated as the average annual rate of increase or decrease in raw methane emissions.

FGA: The F-gas growth rate, is calculated as the average annual rate of increase or decrease in raw fluorinated gas emissions.

NDA: The N₂O growth rate is calculated as the average annual rate of increase or decrease in raw nitrous oxide emissions.

BCA: The black carbon growth rate, is calculated as the average annual rate of increase or decrease in black carbon.

GHP: We calculate greenhouse gas (GHG) emissions per capita for each country.

LCB: This new indicator estimates CO₂ emissions from land cover change.

GIB: Our greenhouse gas (GHG) intensity growth rate indicator serves as a signal of countries' progress in decoupling emissions from economic growth This indicator highlights the need for action on climate change mitigation in countries at all income levels.

2. Climate Change Risk Factor 2 – CCHBC Emission factors per purchasing category

SBA 2021

Total Emissions	Category
4 - Very High	Metal Cans
4 - Very High	Glass Packaging
3 - High	Utilities
3 - High	Fleet Management
3 - High	Logistics
3 - High	Films (Secondary Packaging)
3 - High	PET Preforms
3 - High	PET Resin
3 - High	Plastic Closures
2 - Medium	CDE
2 - Medium	Aseptic Packaging
2 - Medium	Corrugated Packaging
2 - Medium	Labels & Sleeves (Secondary Packaging)
2 - Medium	Metal Closures
2 - Medium	Metal Crowns
2 - Medium	Sweeteners
2 - Medium	Cold Drink Equipment
1 - Low	Coffee Machines
1 - Low	Production Equip. & Maint. Repair Op.
1 - Low	CO2
1 - Low	IST
1 - Low	Corporate Services
1 - Low	Juices
1 - Low	Corporate Services/Consultancy
1 - Low	Sales & Marketing

Climate risks estimations per purchasing category have been updated with actual emission factors used for CCHBC Scope 3 calculation.

Scoring model

Kg CO2 per unit	Risk Estimation
> 4	Very High
2 to 3,99	High
0,5 to 1,99	Medium
0 to 0,49	Low

SBA 2020

Emission intensity of each purchasing category	Very high	Glass			
	High	Cans	Plastic Closures	Other Packaging	PET
	Moderate	Equipment	Sugar Processing	CDE	
	Low	Juice	Concentrate		

Methodology Approach

Social Risks



Methodology Approach

3.1 Forced Labour



Forced Labour

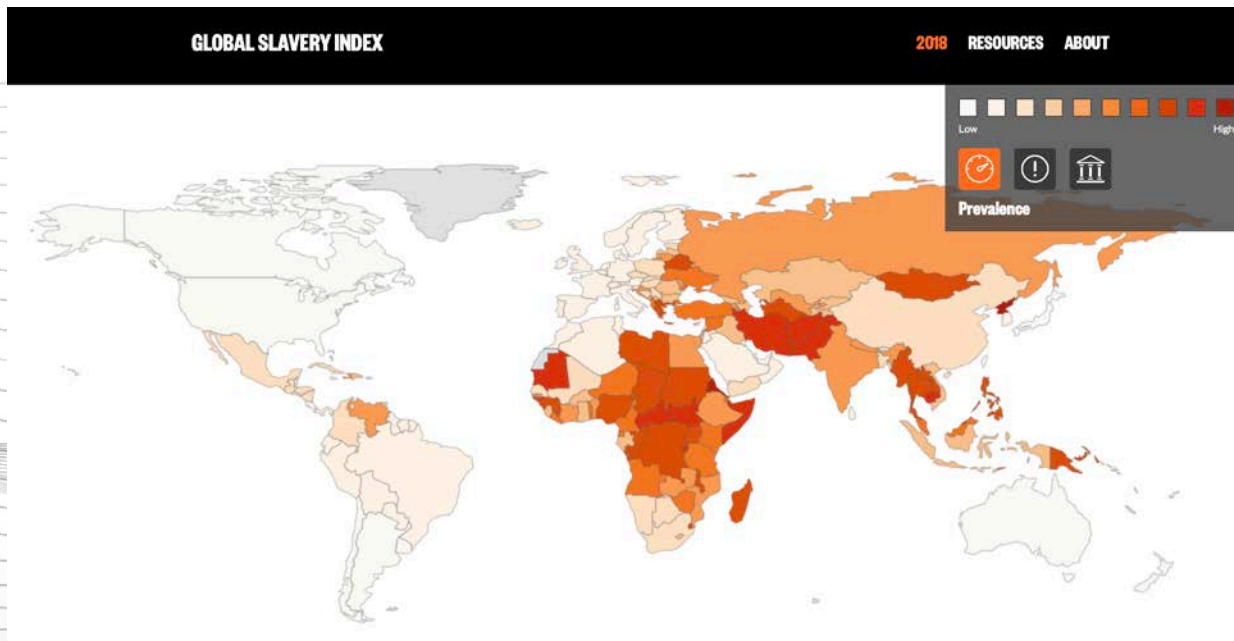
Description: Work or service in the supply chain that would be required of a person under threat of punishment and for which he or she has not made himself or herself available as voluntarily

+	Risk Factor 2 - Purchasing Category Risk Analysis
<ul style="list-style-type: none">Global Slavery Index from the Walk Free Foundation, 2018 <p>The Walk Free Foundation is an independent, privately funded international human rights organisation based in Perth (Australia) focussed on the eradication of all forms of modern slavery.</p> <p>The foundation measures globally modern slavery through an estimation of the prevalence in ‰ based on nationally-representative surveys and an extrapolated risk estimation model.</p>	<ul style="list-style-type: none">sustainable AG/Denkstatt database <p>sustainable AG and Denkstatt consolidate commodity, sector and industry-related risk factors in a self-made database. This database gathers public reports and studies from expert organisms, recognized texts from international institutions and specific studies about forced labour.</p> <p>A verification of the CCHBC purchasing categories is performed through this database in order to identify the main risk elements and define a risk level on forced labour.</p>



Forced Labour

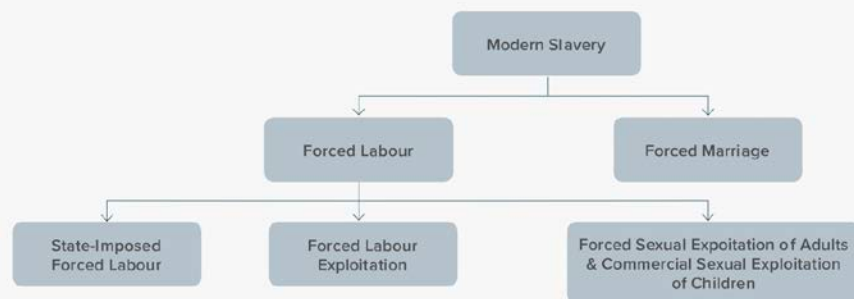
Country risk calculation – Global Slavery Index



Scoring model

Victims per 1.000 people	Risk Estimation
> 10	Very High
5,00 to 9,99	High
2,50 to 4,99	Medium
0 to 2,49	Low

Structure: Modern Slavery



A combined methodological approach is adopted for the global estimates of modern slavery, using three sources of data:

- 54 specially designed national probabilistic surveys involving interviews with about 71,000 respondents across 48 countries;
- Administrative data from International Organization for Migration's databases of assisted victims of trafficking with the 54 datasets to estimate forced sexual exploitation and forced labour of children, as well as the duration of forced labour exploitation;
- Validated secondary sources with systematic review of comments from ILO Experts to estimate state-imposed forced labour

Risk: Forced Labour



Risk identification method used for SBA 2021

Inherent supplier risk is determined according to the following table:

Forced Labour		Category risk analysis <i>Do expert organizations identify a risk related to forced labour in this purchasing category? (sustainable/Denkstatt study)</i>	
		No	Yes
Country risk analysis <i>What is the prevalence of forced labour in the supplier's country?</i>	0 to 2,4‰	Low Risk	Low Risk
	2,5 to 4,9‰	Low Risk	Medium Risk
	5 to 9,9‰	Medium Risk	High Risk
	>10‰	High Risk	Very High Risk



Child Labour

Description: Presence in the supply chain of exploitation of children interfering with compulsory school attendance and/or through a mentally, physically, socially and/or morally harmful work

Risk Factor 1 - Country Risk Analysis	Risk Factor 2 - Purchasing Category Risk Analysis
<p>Combination of</p> <ul style="list-style-type: none"> Percentage of children aged 5-17 years engaged in child labour from UNICEF, 2019 <p>Consolidation per country of children aged from 5-17 years engaged in child labour through diverse sources.</p> <p>AND</p> <ul style="list-style-type: none"> Proportion of children engaged in economic activity (%) Annual from ILOSTAT, 2020 <p>Consolidation per country of children aged from 5-17 years engaged in child labour through diverse sources.</p>	<ul style="list-style-type: none"> sustainable AG/Denkstatt database <p>sustainable AG and Denkstatt consolidate commodity, sector and industry-related risk factors in a self-made database. This database gathers public reports and studies from expert organisms, recognized texts from international institutions and specific studies about child labour.</p> <p>A verification of the CCHBC purchasing categories is performed through this database in order to identify the main risk elements and define a risk level on forced labour.</p>



Child Labour

Country risk calculation – UNICEF & ILOstat



Scoring model

% of working children	Risk Estimation
> 8,00	Very High
4,00 to 7,99	High
1,00 to 3,99	Medium
0 to 0,99	Low

The two sources have a similar method but complement each other in terms of country coverage. They indeed cover sometimes different countries and are therefore both used for the present analysis.

When a different data is shown, we have taken the worst data to set-up the country risk profile.

Children around the world are routinely engaged in paid and unpaid forms of work that are not harmful to them. However, they are classified as child labourers when they are either too young to work or are involved in hazardous activities that may compromise their physical, mental, social or educational development. In the least developed countries, slightly more than one in four children (ages 5 to 17) are engaged in labour that is considered detrimental to their health and development.

Therefore, the considered estimates on economic activity among children aged 5-17 refer to:

- (a) children 5–11 years old who, during the reference week, did at least one hour of economic activity,
- (b) children 12–14 years old who, during the reference week, did at least 14 hours of economic activity,
- (c) children 15–17 years old who, during the reference week, did at least 43 hours of economic activity. For more information, refer to the concepts and definitions page.



Risk Category: Child Labour



Risk identification method used for SBA 2021

Inherent supplier risk is determined according to the following table:

Child Labour		Category risk analysis <i>Do expert organizations identify a risk related to child Labour in this purchasing category? (sustainable/Denkstatt study)</i>	
		No	Yes
Country risk analysis <i>How important is the engagement of children in the supplier's country economy?</i>	0 to 0,9%	Low Risk	Low Risk
	1 to 3,9%	Low Risk	Medium Risk
	4 to 7,9%	Medium Risk	High Risk
	>8%	High Risk	Very High Risk



Disregard of Labour Rights

Description: Lack of consideration of people's rights in the relation with their employers in the supply chain through freedom of association, unequal treatment and/or fair wage

Risk Factor 1 - Country Risk Analysis	Risk Factor 2 - Country Risk Analysis
<ul style="list-style-type: none">▪ ITUC Global Rights Index from the International Trade Union Confederation, 2021 <p>The International Trade Union Confederation is the world's largest trade union federation, and it has for main areas of studies promotion and defence of workers' rights and interests. It includes trade union and human rights; economy, society and the workplace; equality and non-discrimination; and international solidarity.</p> <p>The Confederation has published in 2021 the 8th edition of the ITUC Global Rights Index, famous for its deep analysis and the ranking of the „Worst Countries for working people“ with a strong focus on rights violations.</p>	<ul style="list-style-type: none">▪ Statistics on the working poor from ILOSTAT, 2021 <p>This issue of ILOSTAT's Spotlight on work statistics focuses on employed people living in extreme poverty around the world.</p> <p>In this frame, the ILO shares on its statistics-dedicated website the share of employment by economic class in 2021, with lowest economic class based on the World Bank's international poverty line of \$1.90 a day.</p>



Disregard of Labour Rights

Country Risk Indicator 1 – ITUC Global Rights Index

The ITUC Global Rights Index depicts the world's worst countries for workers by rating 139 countries on a scale from 1-5 based on the degree of respect for workers' rights.

Workers' rights are absent in countries with the rating 5 and violations occur on an irregular basis in countries with the rating 1

Scoring model

- 5+** No guarantee of rights due to the breakdown of the rule of law
- 5** No guarantee of rights
- 4** Systematic violations of rights
- 3** Regular violations of rights
- 2** Repeated violations of rights
- 1** Sporadic violations of rights
- No data



BANGLADESH

- Regressive laws
- Obstacles to union formation
- Brutal repression of strikes



NEW

BELARUS

- Repression of strikes and assemblies
- Arbitrary arrests
- Obstacles to union registration



BRAZIL

- Murders
- Repression of strikes
- Collective bargaining undermined



COLOMBIA

- Murders and impunity
- Union-busting and dismissals



EGYPT

- Severe obstacles to union registration
- Prosecution of strikers
- Union-busting and dismissals



HONDURAS

- Violence
- Union-busting and dismissals
- Collective bargaining undermined



NEW

MYANMAR

- Brutal repression of strikes and protests
- Arbitrary arrests
- Repressive laws



THE PHILIPPINES

- Violence and murders
- Arbitrary arrests
- State repression



TURKEY

- Brutal repression of strikes
- Union-busting



Disregard of Labour Rights

Country Risk Indicator 2 – Statistics on the Working Poor



Definition

- The proportion of the employed population below the international poverty line of US\$1.90 per day, also referred to as the working poverty rate, is defined as the share of employed persons living in households with per-capita consumption or income that is below the international poverty line of US\$1.90

Concepts

- **Employment:** All persons of working age who, during a short reference period (one week), were engaged in any activity to produce goods or provide services for pay or profit.
- **Poverty Line:** Threshold below which individuals in the reference population are considered poor and above which they are considered non-poor. The threshold is generally defined as the per-capita monetary requirements an individual needs to afford the purchase of a basic bundle of goods and services. For the purpose of this indicator, an absolute international poverty line of US\$1.90 per day is used.
- **Working poor:** Employed persons living in households that are classified as poor, that is, that have income or consumption levels below the poverty line used for measurement.

Formula

$$\text{Working poverty rate} = \frac{\text{Employed persons living on less than US\$ 1.90 a day}}{\text{Total employment}} \times 100$$

Scoring model

% of working poor	Risk Estimation
> 5,00	Very High
3,00 to 4,99	High
1,00 to 2,99	Medium
0 to 0,99	Low



Risk Category: Disregard of Labour rights



Risk identification method used for SBA 2021

Inherent supplier risk is determined according to the following table:

Disregard of Labour rights		Country risk analysis <i>How many working poor are present in the supplier's country according to the ILOSTAT?</i>			
		0 to 0,9%	1 to 2,9%	3 to 4,9%	> 5%
Country risk analysis <i>What is the performance of the supplier's country on the ITUC Global Index?</i>	1	Low Risk	Low Risk	Medium Risk	High Risk
	2	Low Risk	Medium Risk	Medium Risk	High Risk
	3 or 4	Medium Risk	Medium Risk	High Risk	Very High Risk
	5 or 5+	High Risk	High Risk	Very High Risk	Very High Risk



Water Stress Risk Methodology Summary

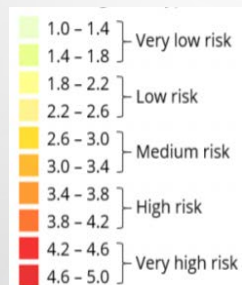
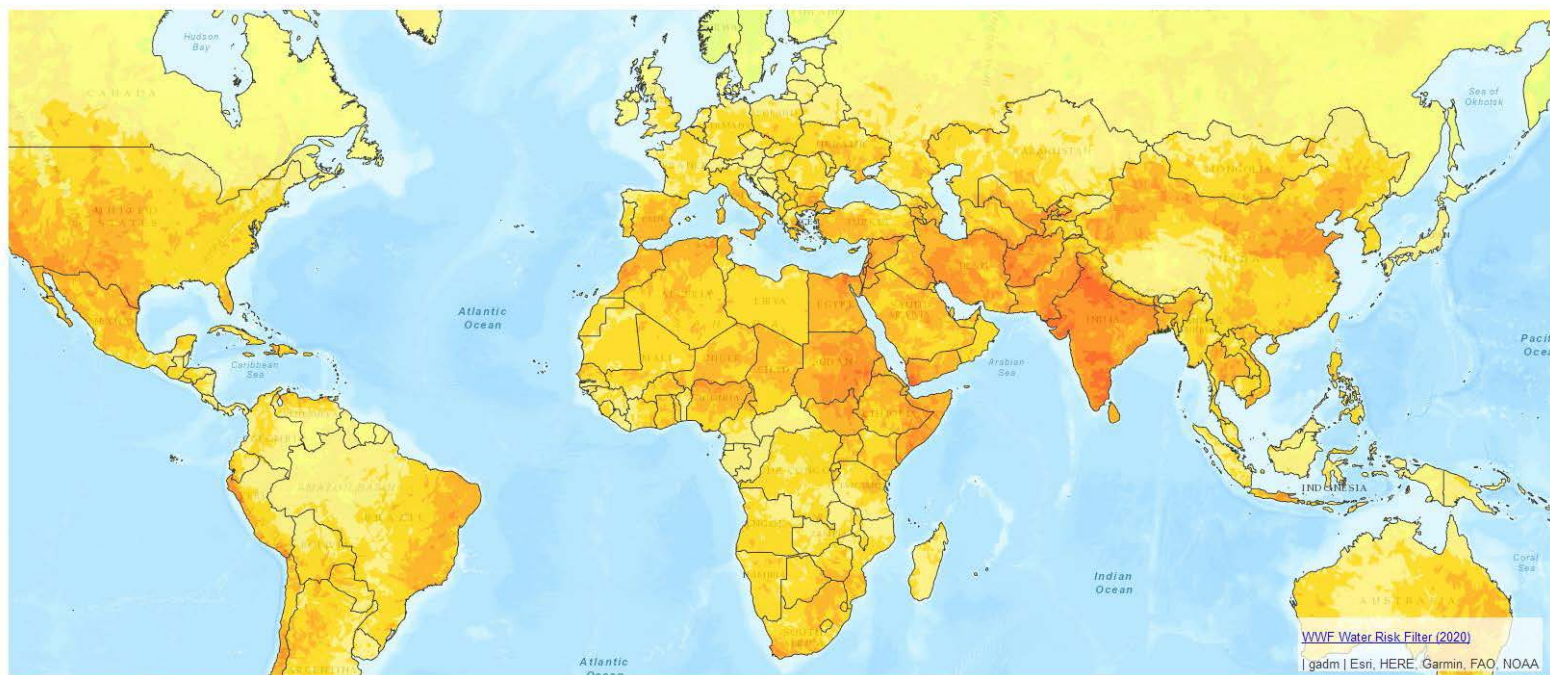
- We identify Water basin and Operational Risk per Supplier site (taking into consideration their industry) through WWF Water Risk filter tool and plot our suppliers on the following Water Risk Matrix
- For the supplier that their water foot print as per below table is low/medium and for which assessment through WWF Water Risk filter tool is not available we proceed as follow: a) determine the water needs as per following table, b) identify river basin of production and determine water stress level in that river basin based on WWF geographical risk per industry (if available), and c) plot our suppliers on the following Water Risk Matrix

Water footprint of material	Very high	irrigated maize irrigated beet irrigated cane			
	High	irrigated orange irrigated citrus	aluminium from raw material steel from raw material	cardboard	
	Moderate	maize beet cane	glass aluminium from recycling steel from recycling	PET	PE & MRO
	Low	orange citrus	Pineapple Apple		

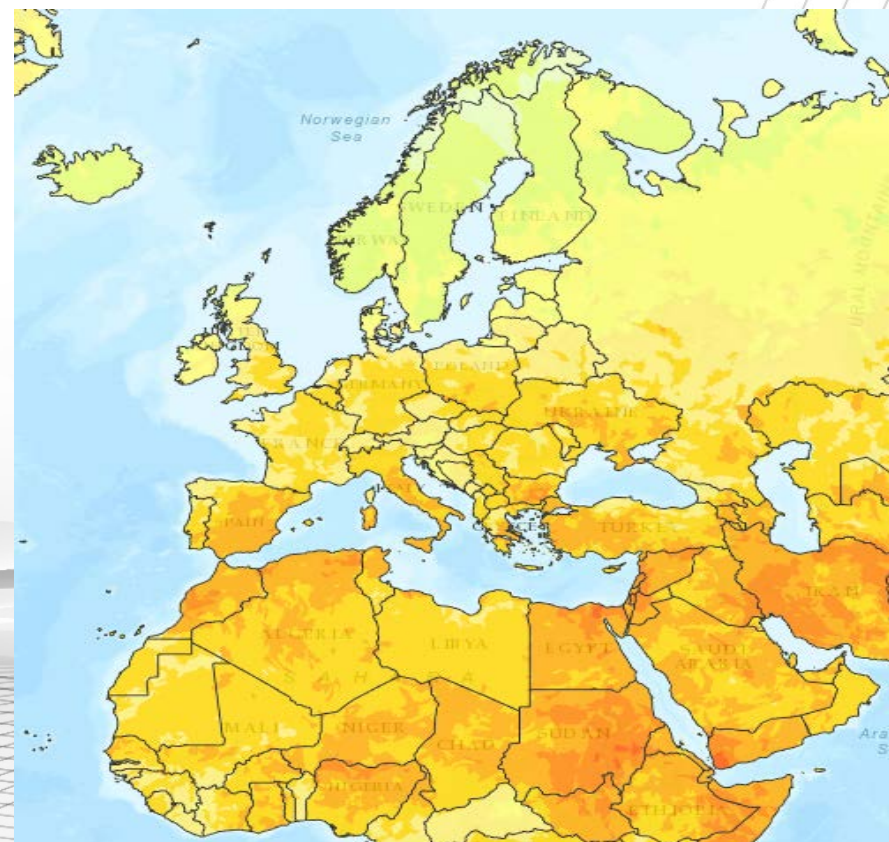
Water Stress Risk Methodology (2/2)



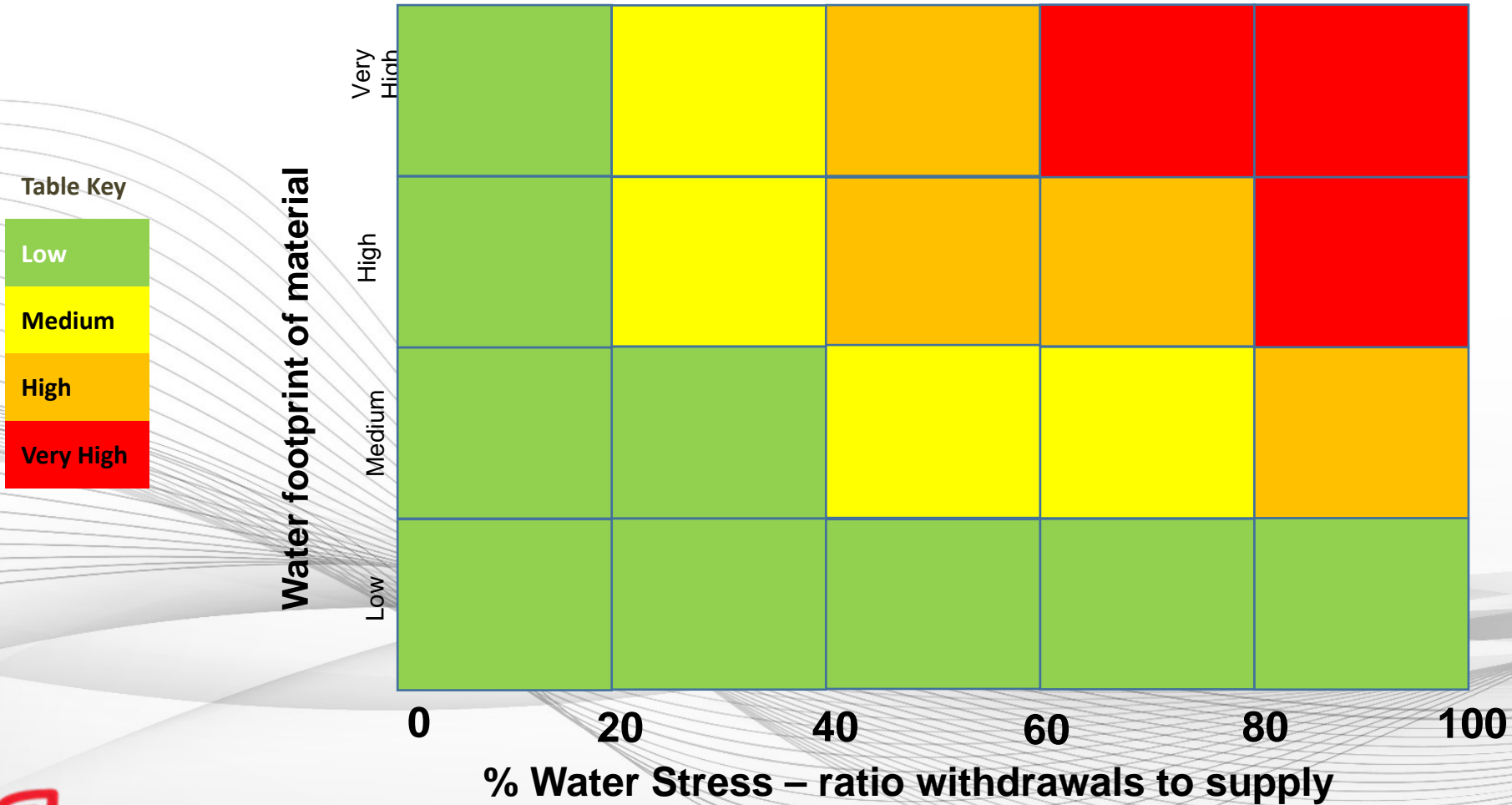
Maps



The map represents the aggregated overall water risk for a selected industry. The weighting scheme varies between different Industries and therefore overall risk maps may vary.



Water Stress Risk Matrix (CCH Methodology)



The WWF Water Risk Filter (WRF) covers all relevant elements of water risks, all industries (standard classifications) and all countries of the world, it is a practical online tool that enables companies and investors to explore, assess, value and respond to water risks in their operations, supply chain and investments.

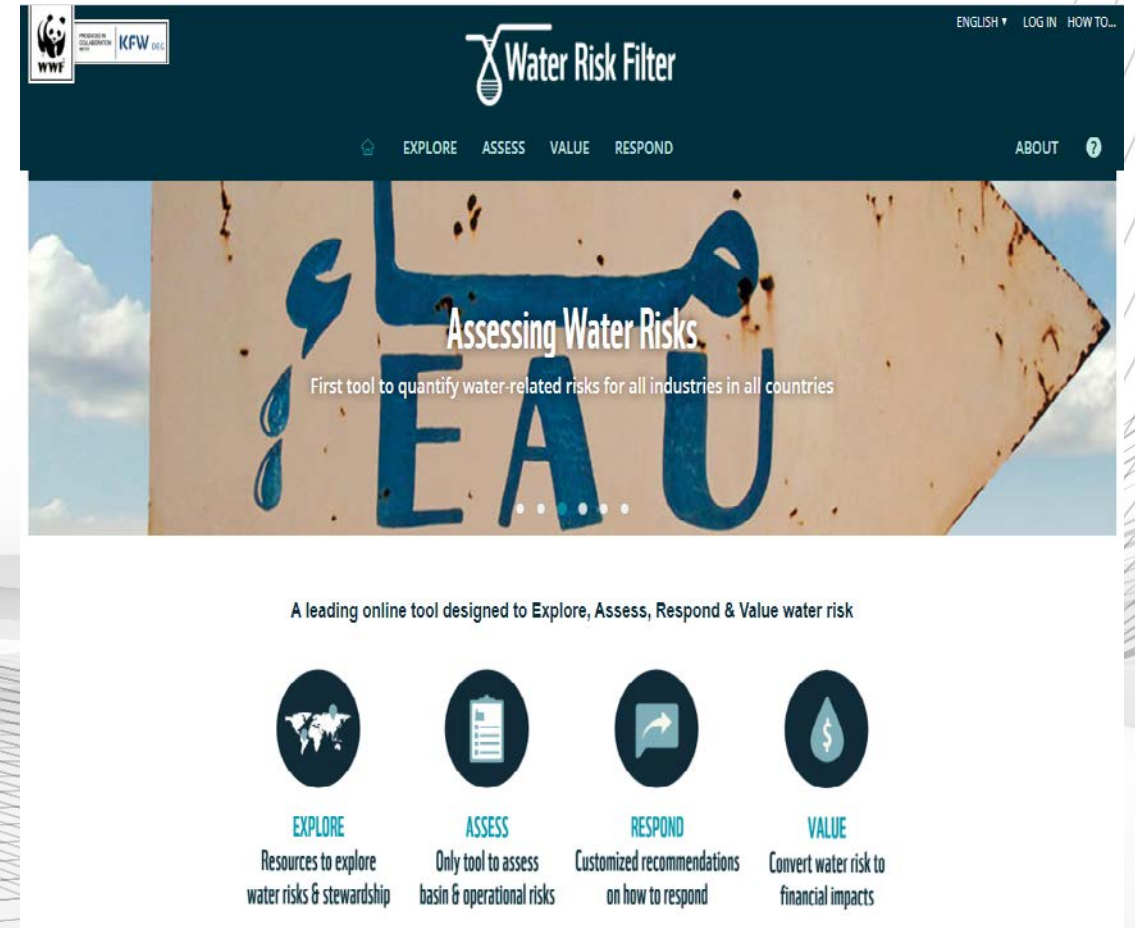
The Water Risk Filter's risk assessment is based on a company's geographic location, which informs a site's basin-related risks, as well as characteristics of its operating nature (e.g., its reliance upon water, its water use performance given the nature of the business/site), which informs a site's operational-related risks.

CCH assessed all Direct Group Critical suppliers through Water Risk tool plus several Indirect Group Suppliers from categories that may have Water impact.

Suppliers received a template and a questionnaire that they had to fill in. CCH received the respective information and upload them at Water Risk filter which generated the respective **Overall Risk scoring** per Supplier site.

Overall Risk - The combination of the Basin and Operation risk (equally weighted) provides a comprehensive overall water Risk assessment.

In rare cases where operational questionnaire is missing overall risk is based only on Basin Risk.



The screenshot shows the WWF Water Risk Filter interface. At the top, there are logos for WWF, KFW, and DEG. The main navigation bar includes 'EXPLORE', 'ASSESS', 'VALUE', and 'RESPOND'. Below this, a sub-navigation bar highlights 'Basin Risk' among other steps: 'Introduction', 'Basin Risk', 'Operational Risk', 'Analyse Risk', and 'Analyse Opportunity'. The interface is divided into two main sections: 'Single site' and 'Portfolio'. The 'Single site' section includes fields for 'Site Name*', 'Select Industry*' (with a dropdown menu showing 'No industries'), and 'Select Exact Location*' (with a map pointer). The 'Portfolio' section has similar fields. At the bottom, there are two buttons: 'Save and proceed to operational risk' and 'Save and analyse results'. The background of the interface shows a map of the Amazon Basin region.

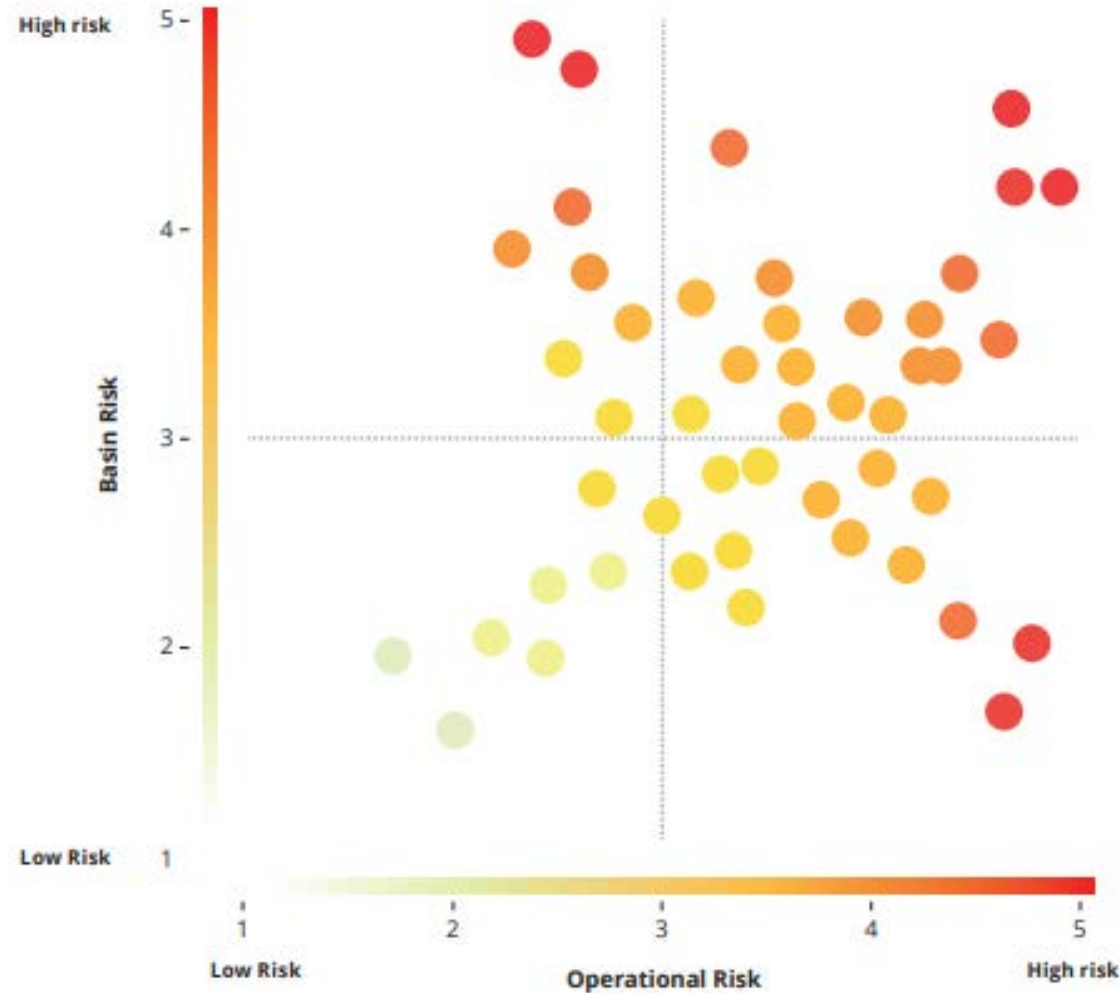
Basin Risk – Companies face different physical, regulatory and reputational risks due to the nature and conditions of the basins in which they are operating. The geographic location of a company's sites will determine its basin water risk exposure.

Suppliers provides to CCH information on the sector and locations of its facilities (which are serving CCH) by using a predefined template, in order to assess its water risks based on location, referred to as basin-related risk.

CCH receives the questionnaires from suppliers and upload them on WWF Water Risk Filter platform. Based on the Water Risk Filter's 32 water risk data sets and pre-selected industry weightings, Overall basin risk scores (ranging from 1 to 5) at the facility and for the entire portfolio are generated.



WWF - Water Stress Risk Matrix



By assessing both basin and operational risks, companies and investors can get a complete understanding of the potential water risk facing their operations and investments, which will help to better focus efforts and actions to address them.

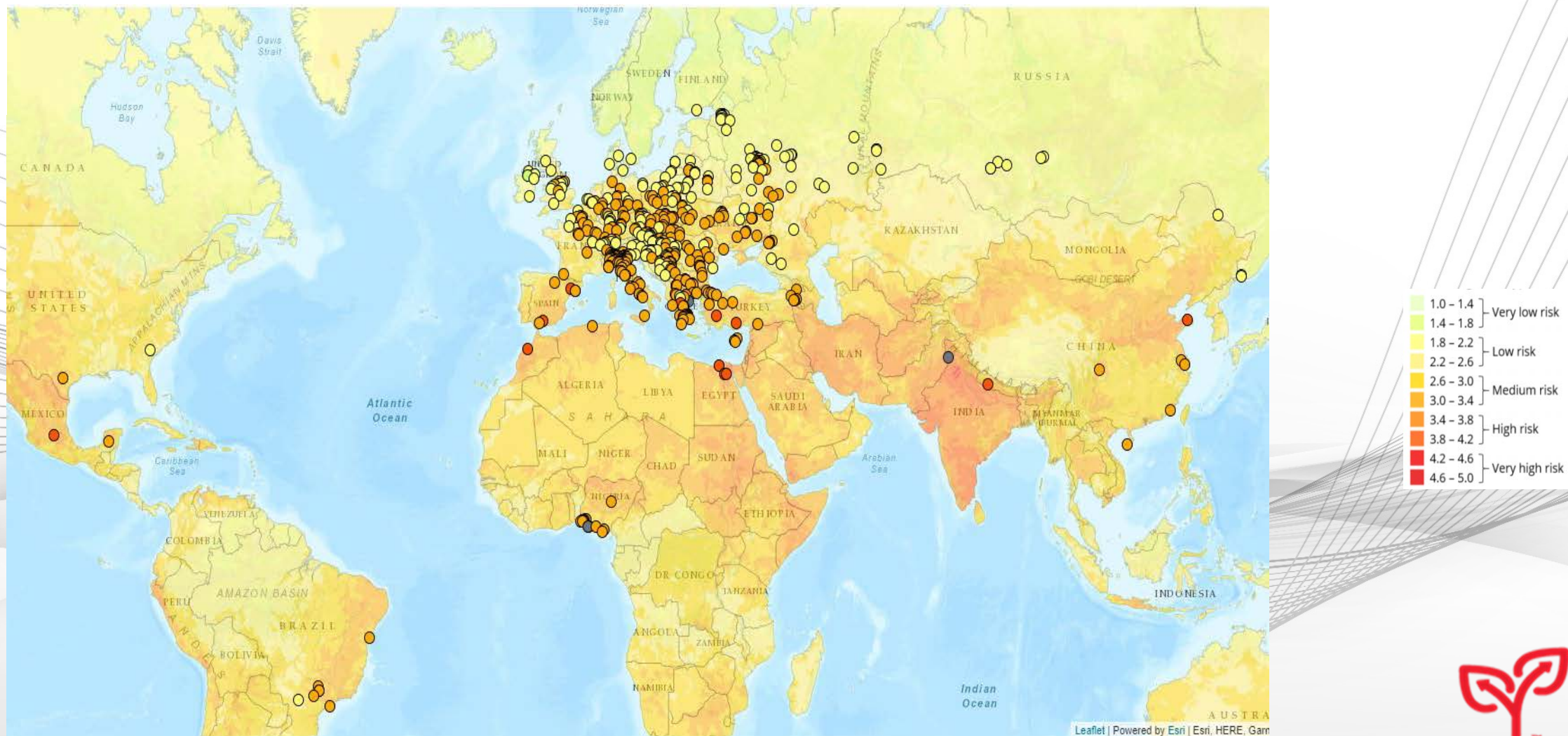
Table Key

Low
Medium
High
Very High

WWF Water Risk Filter Map

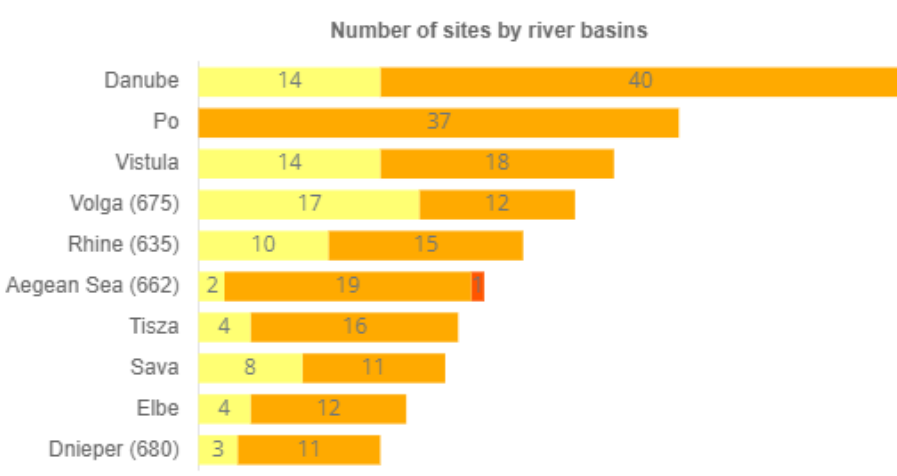
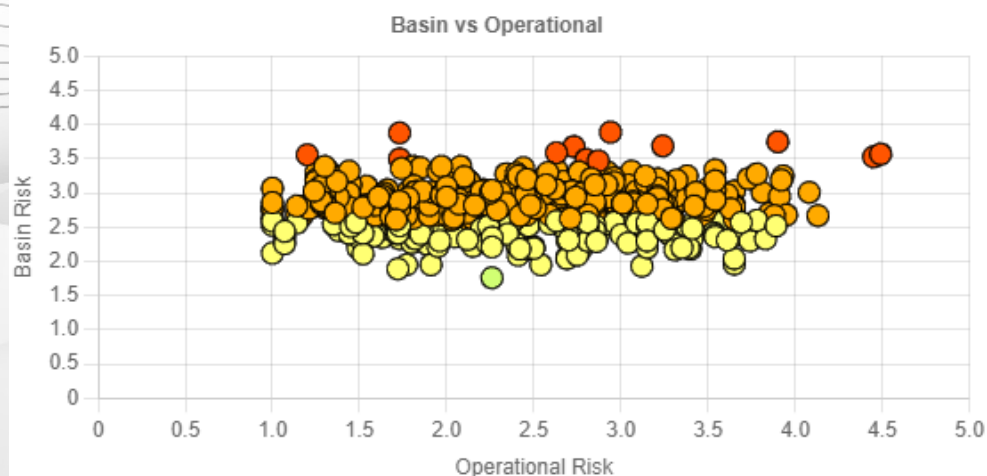
The map shows the distribution of all suppliers' sites represented by green pointers across the world and how they are exposed to different types of basin water risks.

The tool allows you to choose the type of industry and the suppliers sites. Thus, different maps have been created per Category.

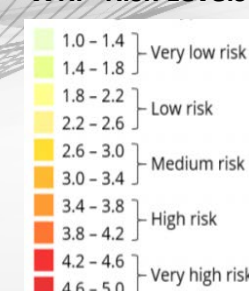


WWF Water Risk Filter Graphs

The Graphs shows our Suppliers Risk per Risk Category per production site and the Risk Matrix of all our supplies assessed through WRF



WRF Risk Levels



Water Risk Results based on WFF assessment methodology

In 2021 we assessed all Direct Group Critical suppliers as well as Secondary Packaging, Aseptic Fiber Packaging, CDE and Sales & Marketing Indirect critical supply base: The combination of the Basin and Operation risk (equally weighted) provides a comprehensive overall water Risk assessment.

Water Basin Risk: is updated on annual basis utilizing WFF platform

Operational Water Risk: Suppliers receive a template and a questionnaire for CCH to collect the respective information and uploaded in the WRF on-line Tool per supplier site every 3 years .

Assessment Summary of Overall Water Risk 2021: Of 324 Parent suppliers assessed at 541 sites, we have identified only 8 supplier codes representing 6 suppliers on parent level for 6 production sites (representing 1.9% of total) with overall high-water risks with whom we engage to address specific actions.

Compared to the previous assessment cycle in 2020, in 2021 we reduced the high-water risks sites from 12 to 6

2021 Summary of Analysis as per WRF as per GRI requirements	Full Description	Figures
Total water withdrawal in megaliters (ML): (clause 2.2.2)	Total water withdrawal in megaliters by suppliers with significant water-related impacts in areas with water stress	2,732
Total water consumption in megaliters (ML): (clause 2.5.2)	Percentage of suppliers with significant water-related impacts from water discharge that have set minimum standards for the quality of their effluent discharge	2,839
% of supplier that have set minimum standards for the quality of their effluent discharge (clause 2.4.3)	Total water consumption in megaliters by suppliers with significant water-related impacts in areas with water stress	50%

Notes:

- High Risks supplier consider the ones with average total score from all locations > 3.4
- Figures under GRI requirements include values only for the supplies' locations with total score > 3.4. If a supplier has additional locations with no risk these locations are excluded from the report

EcoVadis in CCHBC and the TCCS

- CCH we promote the assessment of Supplier performance under specialist organizations such as EcoVadis, SEDEX/ SMETA etc.
- Ecovadis has become our key 3rd party Assessment body across The Coca-Cola System (TCCS). Back in mid 2019 together with TCCC, CCEP and CC-Amatil we decided to join forces and share visibility on the performance of our supply base, thus enabling us to make more conscious choices.
- Until the end of 2019 the TCCS four founding members accounted for 996 assessed suppliers of which 501 were contributed by CCH. By May 2022, the TCCS suppliers in Ecovadis are 2587 of which over 1000 have been contributed by CCH.

Evolution of Supplier Recruitment & Evaluation under EcoVadis		Incremental vs YA	% Change
Supplier Count by end of 2018	149		
Supplier Count by end 2019	520	371	+249%
Supplier Count by end 2020	848	328	+63 %
Supplier count by end 2021	1184	336	+40 %

CCH as of September 2019 we have introduced across all our countries a guidance :

- We seek actively Ecovadis for our suppliers across the supply base at the time of tender and not post-tender
- For suppliers with spend over 100K EUR on annual basis tendered or renegotiated, Ecovadis we recommend to be part of the tendering requirement and the RFx
- We have updated our Legal templates (Contracts and Tender documents) to include Ecovadis as a standard clause
- We can accept other 3rd party assessment methods on overall Sustainability performance, but we continue to strive to have our TCCS supply base under EcoVadis as we can easily follow up online with proper tracking and reporting and gradually reduce the need for manual processing on assessment and action plans



Our Ecovadis Assessment 2025 Aspiration Target: Recruit all our Critical Suppliers in Ecovadis Platform
YTD Progress at end 2021: 31%

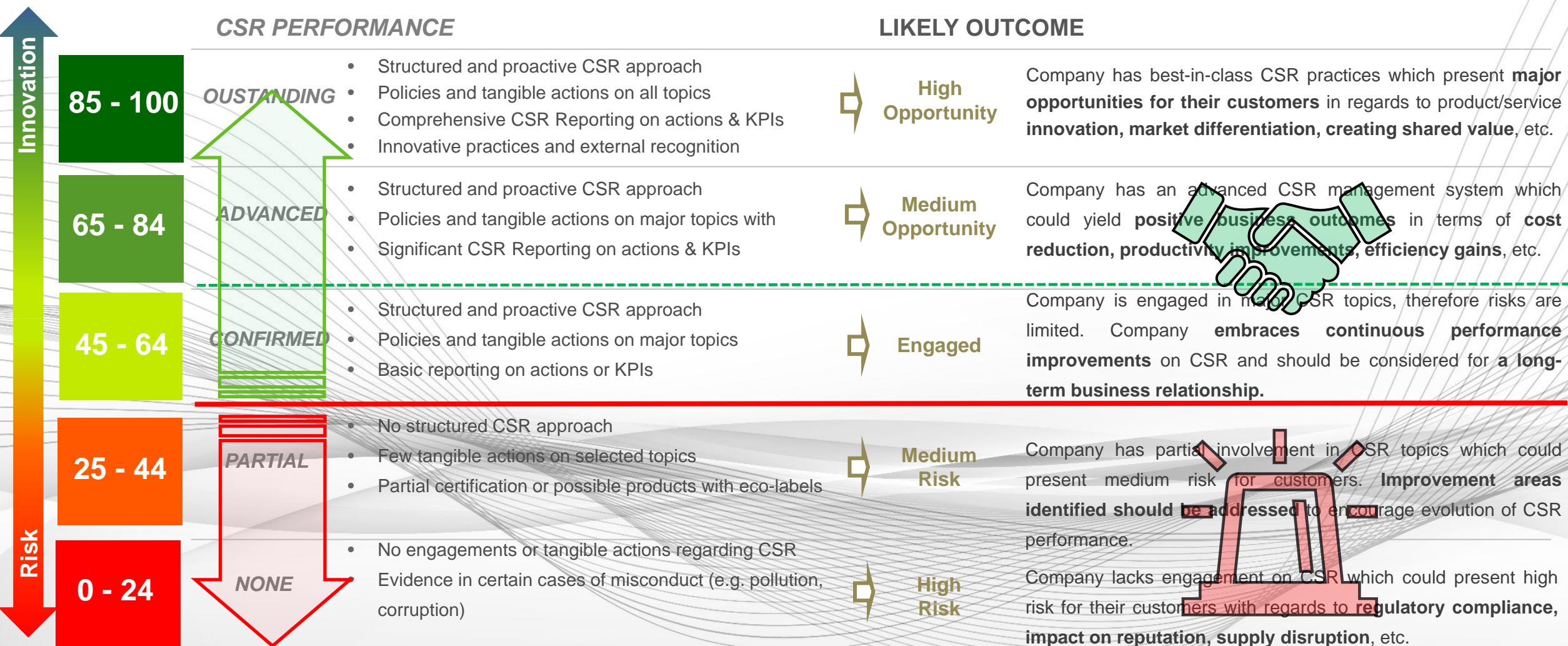
EcoVadis Methodology - 4 themes / 21 CSR Criteria



*Includes Indigenous People and Local Communities Risk Assessment



EcoVadis Scoring Scale and CCHBC Sustainable Sourcing Targets



ESG Pre-Assessment Document

ESG Objectives: Ensure Environmentally Sustainable Sourcing & Minimise Social Risks

When

- During RFX Process to filter suppliers in EcoVadis or equivalent not supplied by Vendor

Scope / Coverage

- CPG & Country Strategic RFPs

Weight

- 5% CSR + 47.5% Technical + 47.5 % Commercial

Validation Areas

- Environment / Human & Labor Rights / H&S Work Conditions / Society / Quality / Agriculture

ESG Final Validation

Green	Fully compliant - no further action required
Orange	Corrective Action required - send supporting evidence within 60 days
Red	Corrective Action required and evaluation of impact of non - conformance

Environmental, Social and Governance (ESG) refers to the three central factors in measuring the sustainability and ethical impact of a company or business.



ESG Pre-Assessment Document

	Threshold for scoring	Green	Orange	Red
Environment	16	<=16	17-32	>=33
Human and Labour Rights	18	<=18	19-36	>=37
H&S Work Conditions	30	<=30	31-60	>=61
Society	7	<=7	8-14	>=15
Quality	14	<=14	15-28	>=29
Agriculture	17	<=17	18-34	>=35
TTL Score - All applicable	305	<=102	103-204	>=205
TTL Score - W/O Quality and Agricul	214	<=71	72-142	>=143
TTL Score - W/O Agriculture	255	<=85	86-170	>=171

Scoring fixed, we have 3 scenarios:

1. All sections applicable, max score 305
2. All sections except Agriculture applicable, max score 255
3. Quality and Agriculture sections not applicable, max score 214

Whether Quality and Agriculture are included in scoring is determined on first answer in respective sheets for that sections, if it is answered N/A that sections wont be counted in score.

NOTES:

1. Option of having some questions applicable and some not in sections Quality and Agriculture is not considered - either all questions are applicable or all questions are not applicable.
2. Scoring: Low is good.
3. Findings can be Critical (scored with 5 points) and Minor (scored with 2 points)

Green	Fully Compliant – no action needed
Orange	Further investigation required – Supplier to be assessed by 3 rd party i.e. EcoVadis or equivalent if awarded or create corrective action plan internally
Red	Proposed not to be used unless imperative due to local conditions – Supplier to be assessed by 3 rd party i.e. EcoVadis or equivalent if awarded or create corrective action plan internally



Category Risk Assessment on EcoVadis Methodology

CCH - 2021



OBJECTIVES

Gain **visibility** into supplier portfolio risks and opportunities

Determine the **CSR Risks** combined with **Procurement risks** for each supplier under 217 purchasing Categories

Identify Risk Level for each supplier

Create a robust basis to **improve** the design of sustainable purchasing program



SCOPE & METHODOLOGY

- Analysis scope: Coca-Cola Hellenic Bottling Company
- Category Risk Mapping including CSR risk, spend score, criticality risk, and logo usage
- Spend score calculated based on (2021) €3.6 billion spend (Direct & Indirect) per each category level and €5 billion spend including TCCC and Finished goods
- Risk Analysis concerns 217 purchasing categories and a total of 16679 on following scope:



PROJECT TIMELINE & RESULTS

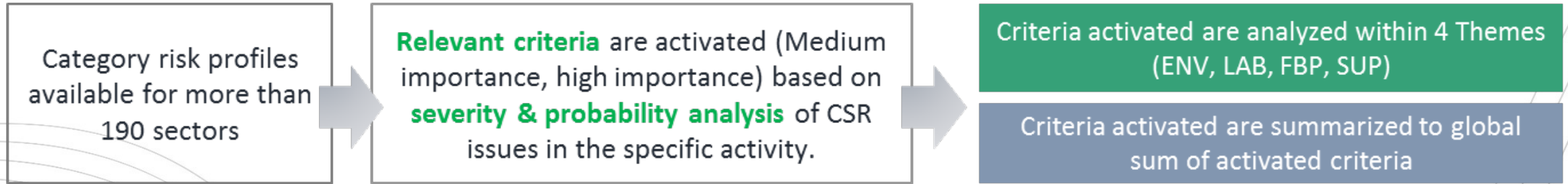
- Project Delivery date: 30 April 2022

	Total	Assessed (Abs. #) (incl. TCCC/FG)	Non-Assessed (Abs. #)	Assessed (%) (incl. TCCC/FG)	Comments
Suppliers	16,679	16,199	480	97.1%	non-assessed represents uncategorized taxonomy items & Sponsorships (which are not procurement addressable)
Spend	€ 4,997,317,094	€ 4,988,795,277	€ 8,521,817	99.8%	assessed includes TCCC & Finished Goods (assessed by QSE & Commercial Departments)

Note: Details supplied under 1.6.3 CCHBC Risk Assessment Analysis 2021 – DJSI



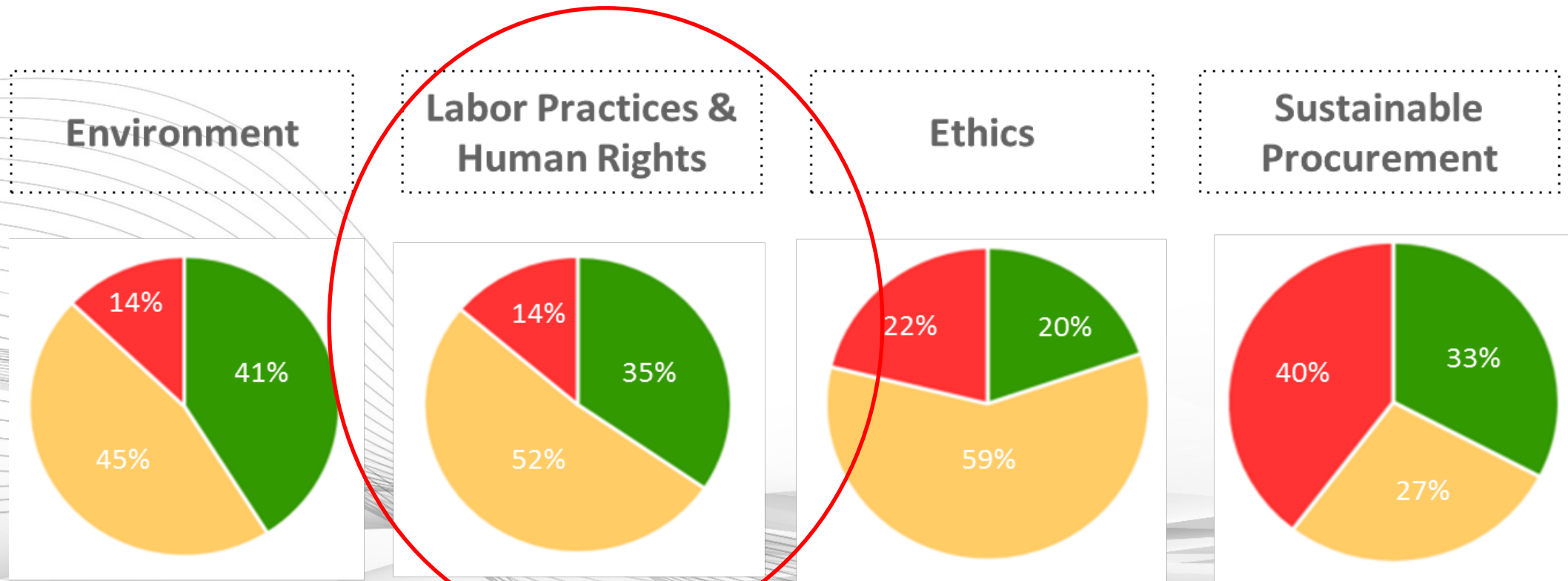
Category Risk Mapping by EcoVadis Industry Sector Materiality Analysis



Other transportation support activities		Environment		Labor & Human Rights		Ethics		Sustainable Procurement	
Key CSR Issues		Importance	CSR issue	Importance	CSR issue	Importance	CSR issue	Importance	CSR issue
Environment		Medium	Energy Consumption & GHG	High	Employee Health & Safety	Medium	Corruption & Bribery	Medium	Suppliers & Environment
Definition		Non-activated	Water	Medium	Working Conditions	Medium	Anti-competitive Practices	Medium	Suppliers & Social
Industry issues		Non-activated	Biodiversity	Medium	Social Dialog	Medium	Responsible Information Management	Medium	
At a global level, the movement of freight accounts for all the energy consumed by transport (IPCC, 2007). 9 trade related emissions come from international trade emissions from other transportation and support activities contribute a significant amount towards this global total. Indirect GHG emissions from this sector are very significant along the chain of transportation activities. Being logistics pyramid, therefore having great influence on and efficiencies along the chain of transportation activities make it through the consolidation or freight which a space to be utilized in each shipment(2). The monitoring emissions ensures transparency and sets the foundation for management(3). Specifically, companies can reduce using less intensive options such as rail and shipping internal energy consumption by choosing alternative technologies for company buildings and warehouses.		Medium	Materials, Chemicals & Waste	Medium	Career Management & Training	Medium		Medium	
		Non-activated	Product Use	Non-activated	Child & Forced Labor	Medium		Medium	
		Non-activated	Product End-of-Life	Medium	Discrimination & Harassment	Medium		Medium	
		Non-activated	Customers Health & Safety	Non-activated	External Human Rights Issues	Medium		Medium	
		Medium	Sustainable Consumption						



L3 Sub-categories Distribution by Theme CSR Risk Level



1 Low
2 Medium
3 High



High risk exposure of L3 categories on Ethics and Sustainable Procurement indicates significant focus area for category managers

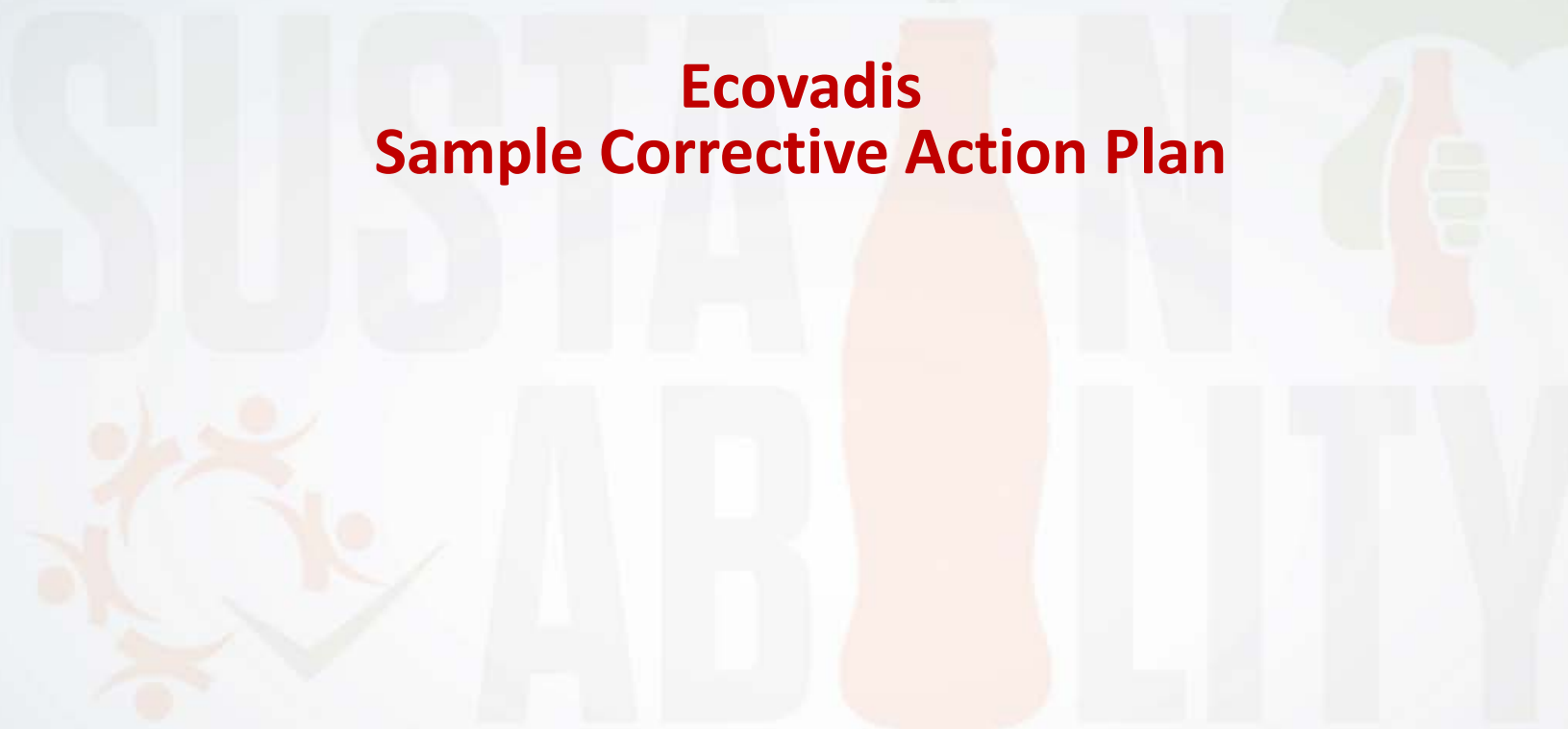
1. CSR Risk

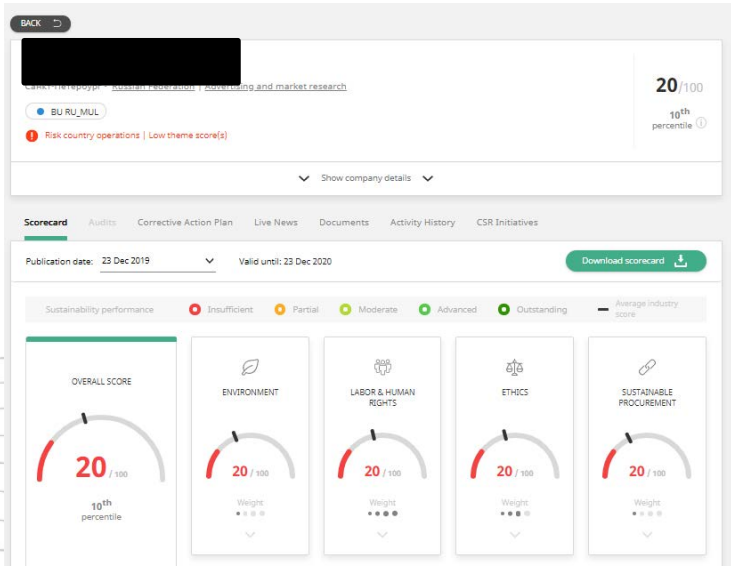
2. Overall Risk
CSR Risk + Procurement Risk





Ecovadis Sample Corrective Action Plan





Search in Network

BACK

Санкт-Петербург - Russian Federation | Advertising and market research

BU RU_MUL

20/100 10th percentile

Risk country operations | Low theme score(s)

Show company details

Scorecard Audits Corrective Action Plan Live News Documents Activity History CSR Initiatives

Based on Scorecard Based on Audits Export

Corrective actions (1)

Status Theme Priority Hide corrective actions from previous assessments More filters

Priority	Theme	Indicator	Corrective actions	Requested by my company	Due/Solved	Status
High	All	None	Mandatory Corrective Action	Yes	2 Nov 2020	Requested

Improvement Areas (26)

The improvement areas below were identified by EcoVadis during the last assessment. They are pre-organized by importance to facilitate improvement.

ecovadis Search in Network

Priority Theme Indicator Corrective actions Requested by my company Due/Solved Status

High	All	None	Mandatory Corrective Action	Yes	2 Nov 2020	Requested
------	-----	------	-----------------------------	-----	------------	-----------

Improvement Areas (26)

The improvement areas below were identified by EcoVadis during the last assessment. They are pre-organized by importance to facilitate improvement.

Priority	Theme	Indicator	Improvement Areas
High	Environment	Policies	Inconclusive documentation on environmental policies
High	Environment	Results	No information on reporting on environmental issues
High	Labor & Human Rights	Policies	Inconclusive documentation on labor & human rights policies
High	Labor & Human Rights	Results	No information on reporting on labor & human rights issues
High	Corruption	Actions	No measures in place regarding corruption
High	Corruption	Policies	Inconclusive documentation on ethics policies
High	Information Security	Actions	No measures regarding information security
High	Information Security	Results	No information on reporting on ethics issues
High	Sustainable Procurement	Policies	Inconclusive documentation on sustainable procurement policies
High	Sustainable Procurement	Results	No information on reporting on sustainable procurement issues

KEY:

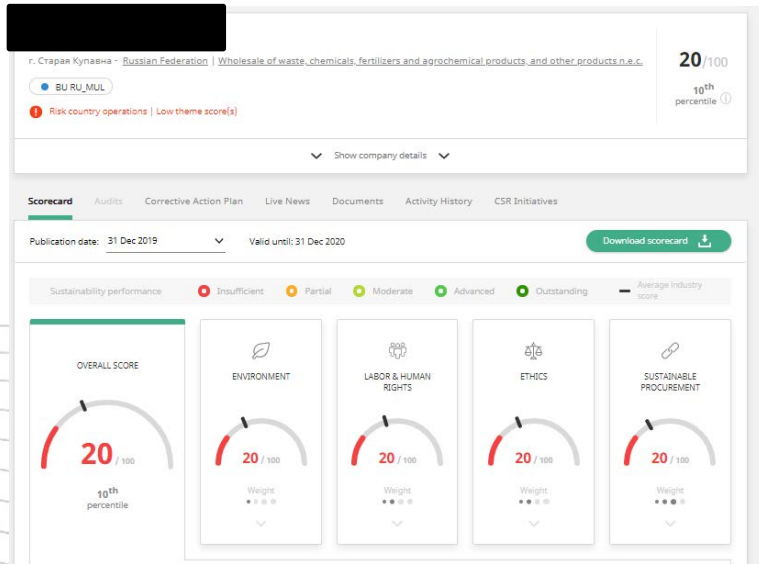
Environment

Human Rights

Ethics & Compliance

Sustainable supply





KEY:

Environment

Human Rights

Ethics & Compliance

Sustainable supply



ecovadis Search in Network Coca Cola Helle... Marinela Paída

Corrective actions (1)

Status	Theme	Priority	Hide corrective actions from previous assessments	More filters		
Priority	Theme	Indicator	Corrective actions	Requested by my company	Due/Solved	Status
High	All	None	Mandatory Corrective Action	Yes	2 Nov 2020	Requested

Improvement Areas (16)

The improvement areas below were identified by EcoVadis during the last assessment. They are pre-organized by importance to facilitate improvement.

Priority	Theme	Indicator	Improvement Areas
High	Actions	No information on measures regarding energy consumption & GHGs	
High	Actions	No information on measures regarding working conditions (working hours,...	
High	Actions	No information on measures regarding employee health & safety	
High	Actions	No information on measures regarding career management & training	
High	Actions	No information on measures regarding diversity, discrimination, and haras...	
High	Actions	No measures in place regarding corruption	
High	Actions	No measures regarding information security	
High	Actions	No information on measures regarding sustainable procurement	