

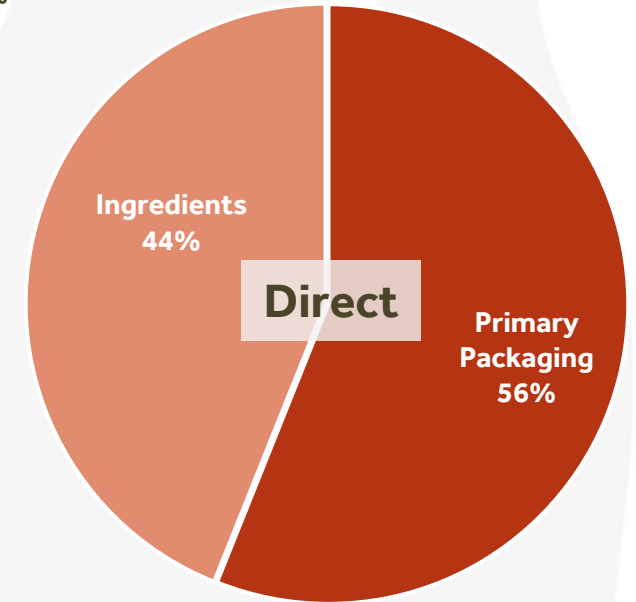
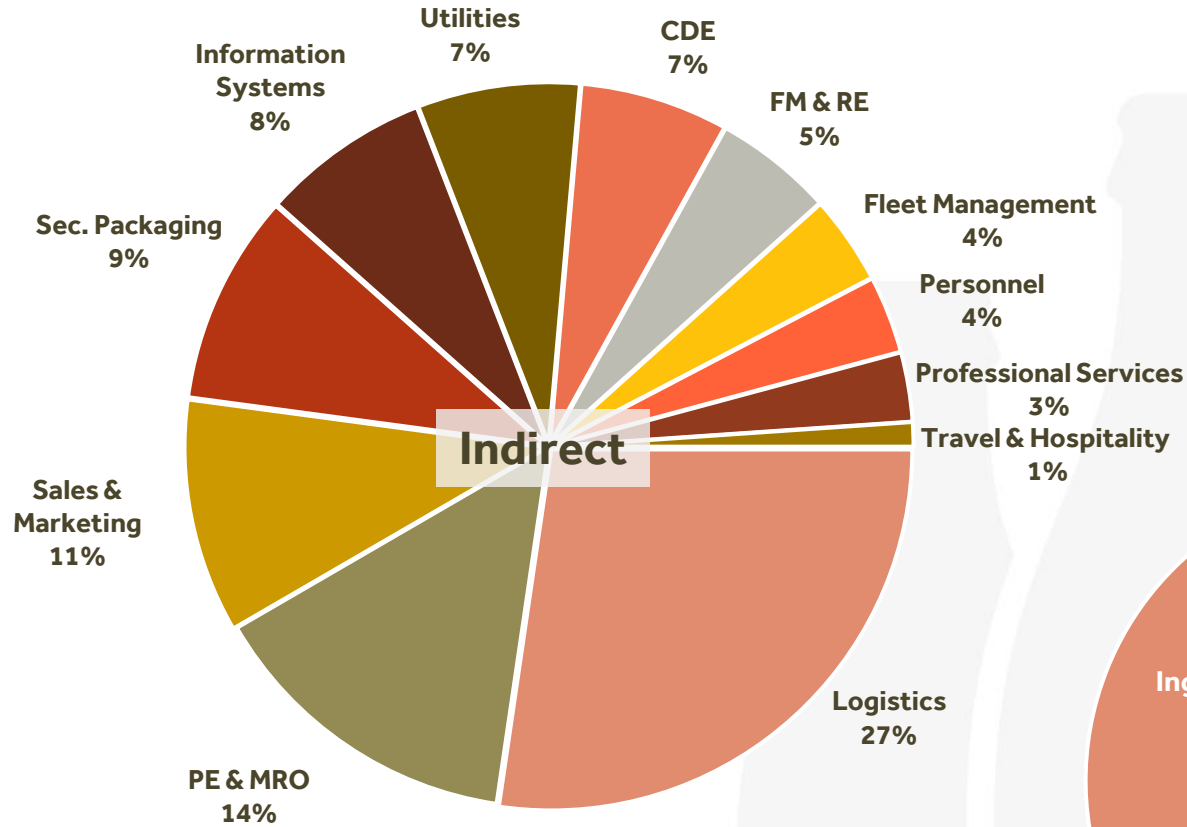
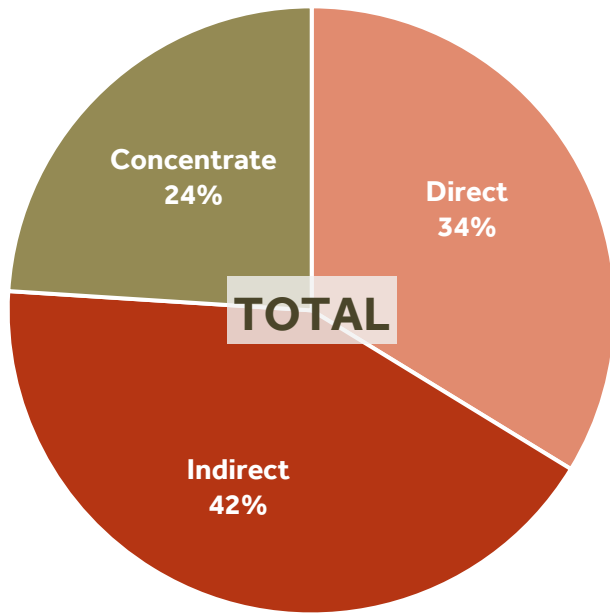
Coca-Cola HBC Procurement Spend 2024

Published: May 2025

2024 - Total Spend: €7.14bn

Procurement Addressable Spend: €5.43 bn

Categories	€ bn
Direct	2.41
Indirect	3.02
Total Proc. Addressable	5.43
Concentrate	1.71
Total Spend	7.14



2024 Supply Base Screening Summary

Supplier Segmentation in Tier 1 (T1)	Suppliers with Spend in 2024		
	Total # of Suppliers Screened per Segment	% of Screened Sup. on Total Suppliers	% of Screened Spend on Total Spend
Group Critical Suppliers	850	5.5%	71.9%
Country Strategic Suppliers	3,282	21.2%	
TCCC	17	0.1%	24.0%
Total # of Significant Suppliers in Tier 1	4,149	26.8%	95.9%
Tactical Suppliers	11,329	73.2%	4.1%
Total # of Tier 1 Suppliers	15,478	100.0%	100.0%
Total # of Significant non-Tier 1 Suppliers	45,572	N/A	N/A

Total Tier 1	T1 Significant & Tactical (Abs. #)
Suppliers	15,478
Spend	€ 7.14 bn
Procurement Addressable Spend:	€ 5.43 bn

2024 Supply Base Assessment Summary

Supplier Segmentation in Tier-1 (T1)	Suppliers with Spend in 2024		
	Total # of Suppliers per Segment	No. of Suppliers Assessed	% of assessed spend on total Spend
Group Critical Suppliers	850	780	59.3%
Country Strategic Suppliers	3,282	1,522	
TCCC	17	17	24.0%
Total # of Significant Suppliers in Tier 1	4,149	2,319	83.3%
Tactical Suppliers	11,329	792	0.7%
Total # of Tier-1 Suppliers	15,478	3,111	84.0%
Total number of significant suppliers in non-Tier 1	45,572	45,231	n/a

	Total Tier 1	Assessed* (Abs. #)	Assessed (%)	Non-Assessed (Abs. #)	Comments
Suppliers	15,478	3,111	20.1%	12,367	Assessed includes Tier 1 Procurement Addressable suppliers/spend & TCCC
Spend	€ 7.14 bn	€ 6.00 bn	84.0%	€ 1.14 bn	

Note: Risk Screening & Assessment consider Industry Sector, Country, Spend Levels and ESG Risks